



SOUL SEARCHERS

Paranormal Magazine

August 2013 ~ Issue 9

Tash MacDonald



Australian Paranormal and Spiritual Expo

Stalls and Vendors
Free talks and displays
Speakers and Workshops
Tours and Investigations

Parramatta Town Hall – 21st September 2013

The Australian Paranormal and Spiritual Expo is dedicated to the paranormal and spiritual realm. Standard entry is only \$5, with loads of parking in the vicinity, and only a 2 minute walk from Parramatta Train Station and Westfields.

Come along to fill your day with learning, fun, and networking. There will be stalls available with hard to buy items, psychics to give you guidance or a glimpse of your future, and workshops to educate you on any aspect of the paranormal/spiritual that you may wish to learn.

Come along and meet like-minded people, who won't judge you for your beliefs, and may even have a similar tale to tell. Listen to teams discussing their investigation techniques, protocols, and equipment, and maybe showcasing any upcoming project they have in the works.

Find information on the best Ghost Tours that NSW has to offer, and browse all of the specialty stalls with items you won't find in a standard shopping centre.

For the more dedicated, special workshops will be on offer. For more information and the purchase of tickets see www.australianparanormalandspiritualexpo.com

Contents

Note from the Editor	page 5
Haunted Lighthouses	page 6
Belief	page 11
Table Tipping	page 13
Subterranean Sydney	page 15
Why I became a Paranormal Investigator	page 22
UFO's Werewolves & The Pig-Man	page 26
Interview with Allen Murdie of The Ghost Club	page 29
SOuL Searchers Parapsychology Course	page 33
SOuL S.P.I	page 34
Australian Paranormal Phenomenon Investigators	page 35
Paranormal Equipment	page 36
Paranormal Groups within Australia	page 37
Workshops, Courses & Events	page 40
Friendly Businesses	page 51
Soul Searchers Advertising & Deadlines	page 59

Cover –Troubridge Island Lighthouse by Tasha MacDonald

Contributors to Soul Searchers Paranormal Magazine

Below are profiles of our regular writers and also our occasional and past contributors to Soul Searchers Paranormal Magazine.



Janine Donnellan ~ Editor

Janine Donnellan is the founder of SOuL.S.P.I. (SOuL Searchers Paranormal Investigations) and Editor of the online Soul Searchers Paranormal Magazine. She is also Lead Investigator of the SOuL.S.P.I. Team. Janine has been conducting house clearings and paranormal investigations for over 15 years and established SOuL.S.P.I. Team in 2006. Janine has a certificate of Advanced Achievement in Parapsychology (1998) Australian Academy of Applied Parapsychology and her interest in the occult was developed as a young child through her spiritualist Grandfather. Janine is also an Energetic Healer and Reiki practitioner.



Jenny Taylor ~ Website Manager

Jenny is the Website Manager and Part-time Investigator for SOuL.S.P.I. Jenny's fascination with the paranormal and occult developed during her childhood and in later years she explored areas such as psychic development, Reiki and other alternative healing methods. Jenny has been part of the SOuL.S.P.I. team since it's beginning in 2006.



Nic Hume ~ Assistant Editor

Nic is the Co-Founder and Lead Investigator of APPI – Australian Paranormal Phenomenon Investigators. Nic's fascination with the paranormal realm was cemented at the tender age of 14 when she experienced her first full-bodied apparition. Over the years she has had her fair share of unexplainable experiences. Nic has always been curious of why people do what they do, so she studied Psychology at university, and currently works as a Counsellor. She has the ambition of combining this knowledge with her interest in the paranormal to eventually become a Parapsychologist. Nic writes articles for the APPI website, is a regular contributor for Spirit Magazines and has also been published in Doreen Virtue's Saved by an Angel.



Ashley Hall

Ashley Hall is the website owner, administrator and manager of all operation at The Paranormal Guide. He came up with the name The Paranormal Guide about three years ago when he started work on his book about Haunted locations around Australia. His interest in the paranormal started in his teens while reading the Readers Digest book 'Into the Unknown'. From there he researched UFO's extensively before moving into the field of Ghost and Hauntings research about 3-4 years ago.



Lee Brickley

Lee Brickley is the writer and editor of popular alternative news and book review website – The Conspiracy Review. For the last seven years Lee has researched deep geopolitics and paranormal phenomena, writing numerous articles and book reviews to m



Steve Millard ~ Case Manager

Steve is the Case Manager and an Investigator for SOuL.S.P.I. Ever since he was a child Steve has had a fascination with all things paranormal. As he got older he had more questions than answers and as science has developed over the years so too has the equipment he uses to assist him in investigating the paranormal.



Bobby C

Bobby C is a paranormal investigator from N.S.W. Australia and a member of the Ghozt Crew Team. He has been investigating for years trying to uncover and capture onto video, evidence of the paranormal. Here he will share all his info, insights and stories into the paranormal.

Editor's Note



Boring, Boring, Boring.....

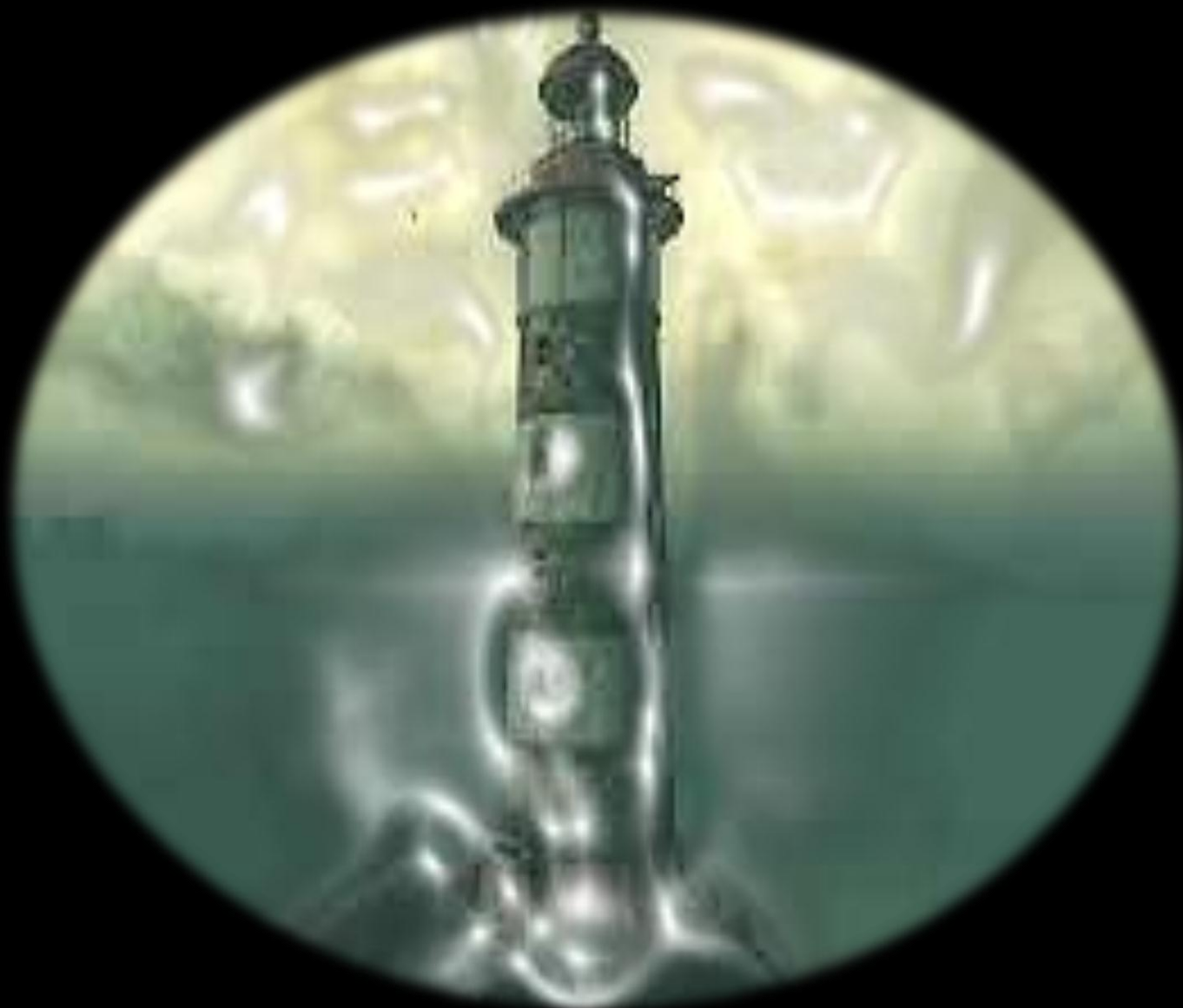
I have to say that I have totally lost interest in the paranormal programs being shown on TV. They are all the same old stuff over and over again, ad-nauseum. The same copycat formats continually being utilized by celebrity paranormal teams. I get annoyed by their strategies, tactics and overall attitudes about what they are doing.

As a by-product of these programs, there are now thousands of amateur investigators around the world whose techniques are modelled after hit cable television shows which claim to use good science but in reality they are mostly pseudoscience.

Soul Searchers Magazine would like to hear your opinions on what you think are the best and worst of the paranormal programs on TV. What type of paranormal programs would you like to see introduced? Let us know what media type you prefer, radio programs, podcasts or youtube, etc?

The more we share our views the more we can make a difference.

Janine Donnellan



Haunted Lighthouses

There is something incredibly mysterious about lighthouses. Perhaps it's because of the absolute isolation or the extreme age of many of these magnificent structures. The question remains have the lightkeepers that once lived and died in such isolation, become the ghosts that now inhabit some of these buildings? Perhaps this solitude just leaves a shadowy imprint of their lives within the stone and mortar of these wind and wave-swept beacons.

Australia has 350 lighthouses around the Australian coastline and a single inland lighthouse the Point Malcolm lighthouse. The first lighthouse was Macquarie Lighthouse, which was lit in 1793 as a tripod mounted wood and coal fired beacon.

Many of the earliest Australian lighthouses were built in direct response to shipwrecks in our treacherous waters. They became the refuges for the survivors of shipwrecks and all too often the final resting place for victims.

Troubridge Island

The Paranormal Guide Investigations



The Paranormal Guide Investigation Team headed out to Troubridge Island after learning of the many tragedies that had taken place there. We had not heard of any paranormal activity taking place on the island, but soon after arriving that all changed, as the team set in for two nights of investigations.

Troubridge Island

The Paranormal Guide Investigations

Here are some of the team's experiences from our Troubridge Island investigation. We organised the investigation there solely based on the fact that there had been many ship wrecks around the location which necessitated the construction of the Troubridge Lighthouse in the 1850s. We had

not heard of any stories of hauntings there, but figured we would go have a look anyway.

We booked the island for two nights and made the journey – a matter of travelling from Adelaide to Edithburgh, SA, then a quick boat ride to the location. The islands leasee told us

of a few of the deaths that have taken place at the lighthouse, or the near vicinity (ship wrecks, suicide, possible murder, a boat load of people going missing etc) but I will save those stories for a post solely on the history and haunts of the island.



On arrival we unpacked, and while the rest of the team started to settle in and sort out equipment etc, Ash and Tash went into the disused second residence to see if Tash happened to pick up on any presences. She soon started to pick up on several, however it was an area near an old bathroom, hallway and kitchen that seemed not to be so positive. This was taken note of, and they returned back to the other house.

We discovered a stack of guest books that had comments by previous people who have stayed on the island. Wondering if any of the names were familiar, we started to look through the books. We soon discovered that many, many people, perhaps one group in five, had made comment of strange experiences on the island, especially in the disused second residence. Many made mention of the bathroom, hallway and kitchen in that building, which at least validated some of what Tash had felt.

After dinner that night, we set in for some work.

Please note that although the following experiences include the use of a ouija board, it is not a tool we commonly use. This was for most of us just the second time we have attempted contact through the board, and after this session some of the team may be in a position to think twice before taking part again.

The investigation started with a walk around of the old, disused second lighthouse keeper's cottage. As mentioned, this was where the teams sensitive Tash had picked up on a number of presences, especially around the bathroom and kitchen. These areas were later found to be areas where many previous guests had had their own experiences as was evident in the notes left in the guest books.



Two cameras were set up, one a static camera looking over the kitchen table where we decided to hold the session, and another mobile cam that would be held by one of the team to further record the session from another angle.

Earlier in the day Paul had set up an EM pump and left it running, as theory states that such a device can 'charge' the environment, potentially allowing spirits to easier manifest activity.

Several other devices were set up in the vicinity of the kitchen, though it was the ouija board that would form the focus of the night's (and the following night's) activities and experiences.

Everyone sat around the table, the doors to the hallway and bathroom were left open and the session began. I will focus now just on the board session, as that provided the most

interesting experiences, though at times different pieces of equipment did present with readings.

Four placed their hands on the planchette, after those who chose to protect themselves did so, while others went in raw. After about twenty minutes of asking questions and attempting to elicit a response from the board, the planchette finally began to move.

The letters the planchette indicated were as follows:

E K U L I M A 91 K C A B

Then it was drawn to 'Goodbye'. Ash was recording the letters as they presented themselves, but figured it was complete garbage, as they seemed to present in a random order. Just after the session finished, Tash and Lyn both began to feel some soreness to their heads – not a headache but more of an outer pain. Footsteps were heard to travel towards the kitchen and up the hall from the bathroom, before ceasing.

It was at this point Wes, who had been thinking on the words, said 'The only thing I can think of is K C A B could be 'Back' written backwards'. It was then that Ash made the realisation and came up with what the words could read:

'BACK 19 AM I LUKE (it should be noted that the numbers presented after asking for the agents age).

It was decided to try some other techniques, so we turned on another piece of equipment that many may feel to be controversial – the Ghost Box. This device scans past radio stations, never locking onto a station and continually travels past the different bands. It is thought that the voices that present themselves amongst the white noise may be that of a spirit. Many believe it is just radio chatter being picked up, so we'll let you decide.

Immediately, after turning it on, four words presented – "Luke" "Fuck" "Paul" "Why/Hi". Paul had in fact asked it to say his name, the other words were not in response to a question.

At this point, banging was heard from the chairs left in the bathroom hall, followed by Wes' chair being 'kicked' sufficiently hard enough for us all to hear the bang and to see Wes be jolted. The ghost box was then turned off, and we tried some sensory deprivation work which presented some strange experiences, but the fact we were denying some of our senses may have caused those still free of being dumbed down, to have overcompensated.

At about 1am, after 6 hours of work, we called it a night. We still had a full day and a second night of investigation, so decided it best not to wear ourselves out early. The lights were turned off, and we left the residence to return to our accommodation next door. However, at about 2am it was noticed that the kitchen light in house two was back on, Lyn believing it to be an invitation.

An interesting first night, but night two was when it became really interesting....



The day was spent relaxing, though a few daylight sessions with various equipment were conducted in house two. Wes and Tash ran another ghost box session, where they heard "Backwards" repeated twice but that was about it.

At 8:15pm we returned to house two for our final night's investigation, and although not the whole group was keen on the idea, we had another session with the board. Once

again, after about twenty minutes, the planchette started to move.

This time as it moved, there was a lot of pressure, making a horrible, almost screeching sound from the planchette scraping against the board. The letters it spelt:

T S O H M A I H T I W T O N E K U L

Instantly, when we realised what it had said, although we did not fully understand it, an almost disturbing atmosphere set in for most of the group. Tash felt sick and Lyn read out what it had said backwards:

LUKE NOT WITH I AM HOST

Host is not necessarily a bad thing, but many uses of the word have a negative connotation. Noises were once again heard about the room, the hall and the bathroom. We asked it to move the planchette to "goodbye" but instead it went to "no". At this, we ourselves moved the planchette to goodbye and closed the session. As the board was packed away, a 'hiss' was heard.

Tash wanted to leave the area, as it did not feel right in the kitchen, Lyn joined her as they both left the house completely, leaving Wes, Paul and Ash to investigate... we did not stay long.

The ghost box was turned back on and "Thankyou" "For this" was heard. It was then we noticed torchlight streaming in the window. At first it was ignored, as we thought it was Lyn and Tash walking by, but soon Paul bursts out with "Outside, Now!"

We made our way outside, with a little urgency in our step, to find Lyn in an aggravated state and Tash very concerned. What we did not realise was that Lyn had been yelling at us past the window to leave the building... we could not hear her at all. Lyn had felt something was extremely wrong with what was happening and did not feel comfortable with us staying in the location and preferred we did not return.

We finished for the night, only returning an hour or so later to retrieve the equipment, and

start packing up to leave the next day. However, when we returned to the kitchen we asked Lyn to repeat her actions of trying to draw our attention... this time we could hear her clearly, even over the ghost box. Why we could not hear her originally, we do not know.

All up an interesting weekend, with many interesting experiences. We are now left with quite a few questions:

When reading the letters from the sessions backwards, are we getting the right words or should we be breaking them up differently?

If we are correct, who is 'Luke'?

Who is 'Host'?

Or was it all just a coincidence, ideomotor responses, and expectations causing the planchette to move at our own hands?

At the time of writing, we have a lot of video, audio and photographic review to undertake, and maybe one or more of these questions will be answered. I will let you know of any further developments.

For more photos of Troubridge Island, the lighthouse and the cabins or to ask about the sensory deprivation experiments visit the following album at The Paranormal Guide Investigation Teams page:

<https://www.facebook.com/media/set/?set=a.467103836707127.1073741849.431035770313934>

Ashley Hall 2013.

Photo: Troubridge Island Lighthouse and keepers residences by Tash MacDonald.

Inset Upper: Residence number two in background, kitchen windows showing by Tash MacDonald.

Inset Middle: One of the lighthouse keepers sons, several entries in the guest book make mention of seeing him. Photo by Wes Craker, taken of another photo.

Inset Lower: Troubridge Island sign.

Want more information on all things paranormal, dark and macabre through podcasts, videos, articles and competitions?

Visit The The Paranormal Guide:

www.facebook.com/theparanormalguide



Coffee & Tarot At All Things Iced

Saturdays

10am – 1pm

Come along for coffee and a tarot reading with Janine & Steve from Soul Searchers Spiritual Centre.

Cost \$40 for a 20 minute reading

Booking is advisable

12/3 Richmond Ave, Sylvania Waters

(02) 9522 5596



From the time we leave the womb to early childhood we are forming our belief system. The way we are loved and cared for up to the age of four creates the formula for our core beliefs. If we aren't cared for, or left to feel that we are not in a secure environment, we instinctively know that we can die. A classic example of this is - say you are an infant in your cot, you are crying yet no-one comes to your aid. You are left to cry in your cot for some time. This builds a structure that you are not cared for, your mother does not love you for if you were lovable, or good enough, then someone would be there for you. It is during this moment of stress and despair that a belief system is formed and encompasses four foundations of belief –

1. You are not good enough.
2. Links to your emotions in the cot.
3. Links to your age when this happened.
4. Links to no one coming to your aid.

This becomes programmed into your subconscious mind and is reinforced, and more 'real' for you as life goes on. Now, fast forward to your present life, stop and think of

the good and bad times you have experienced and how they made you feel. Each and every experience has linked and enforced your belief system.

So what happens if you have an 'unexplainable' experience? Well, the structures of your belief system will determine how you evaluate the experience. You could well be a stout believer, an in-between, or total skeptic. Let me use 'orbs' as an example. Mr X takes a photograph with a digital camera, looks at the screen and finds what looks to be an iridescent sphere. Mr X has never noticed this in other photo's he's taken and is mystifyingly puzzled as to what it could be, so he asks Miss B for an opinion. Now, Miss B is a stout believer of the spiritual realm and tells Mr X that it's the spirit of the old caretaker who manifested to make his presence known. Mr X is a bit dubious about this information, although he feels that Miss B has given him a thorough explanation of 'her belief'. Mr X is on a mission to find an answer, so he seeks out Mr Z. Mr Z is always one to call a spade a spade and is surely the right person to settle this. Mr Z views the photo and laughs saying 'Miss B is taking you for a ride, it's nothing but a dust particle, nothing spooky about that'. This confuses Mr X further so he takes some time out to fully research the phenomenon himself. Exploring every possible option and every possible avenue to get an answer. Not feeling swayed in either direction, he weighs up all of the information before him, and makes an 'informed belief'.

As much as our belief system is embedded, having a polarised opinion makes it difficult to ascertain balance. Becoming aware of the difference of the way belief can help or hinder can affect the outcome of viable research in the paranormal realm. Although I've only scraped the surface of such a large topic, I hope this opens the blinds to open belief.

Table Tipping

By Janine Donnellan

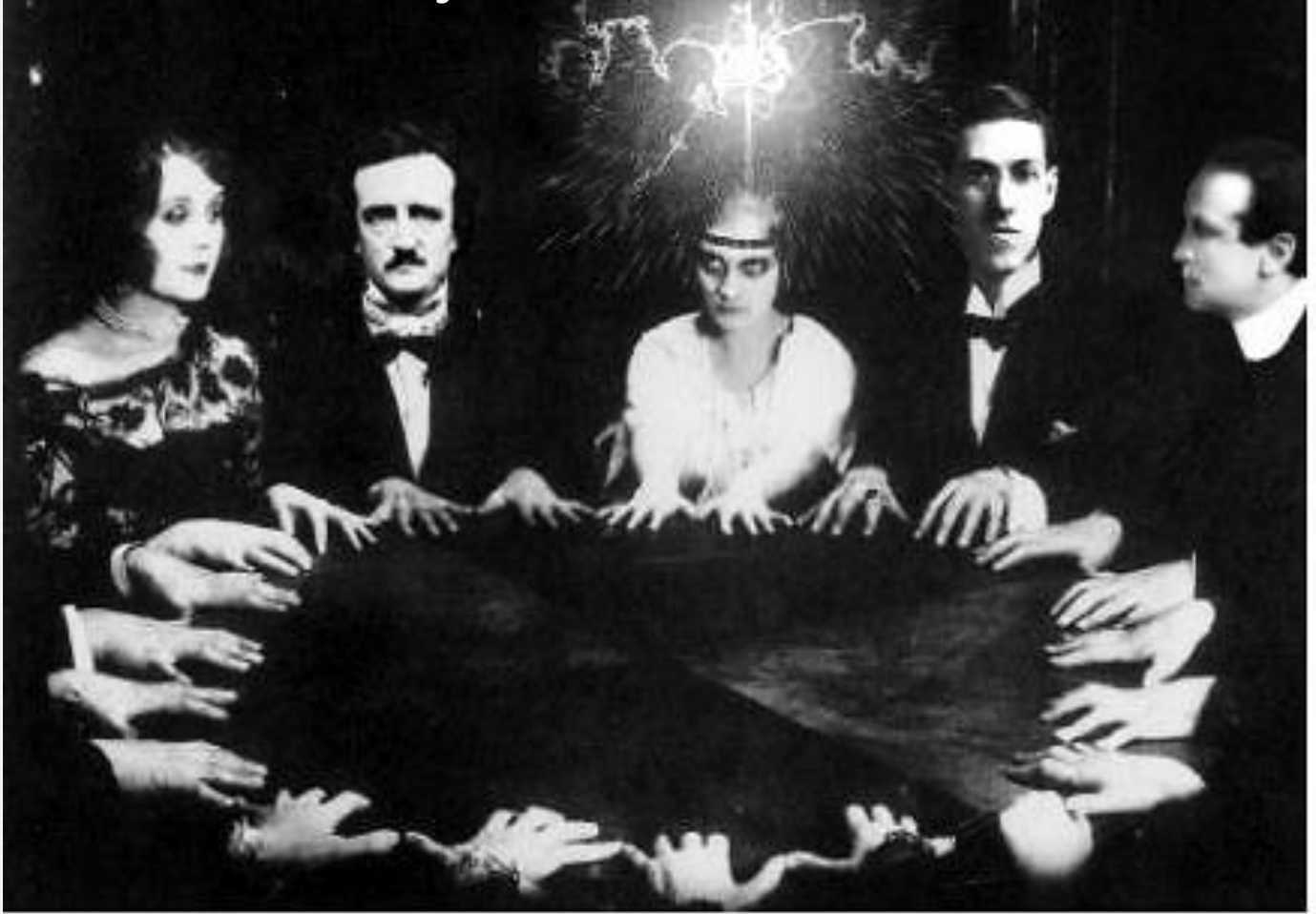


Table Tipping is a type of séance in which participants sit around a table, place their hands on it, and wait for it to move or tip. The table is made to serve as a means of communicating with the spirits.

During the time that Spiritualism was at its height in the mid 1800s, the most popular method of consulting the spirits was for several persons to sit round a table, with their hands resting on it, and they would ask spirit to communicate and then they would wait for the table to move. If the experiment was successful the table would either shake, rotate or would occasionally rise in the air.

The famous scientist Professor Michael Faraday was the first to try and allegedly disprove that table tipping was contact with Spirit. He constructed a specially designed table to rigorously test the claims being made.

Faraday stated the following concerning his investigation:

"The effect produced by the table-turners has been referred to as electricity, to magnetism, to attraction, to some unknown or hitherto unrecognized physical power able to affect inanimate bodies, to the revolution of the earth, and even to diabolical or supernatural agency," he wrote.

Faraday argued the cause was "a quasi involuntary muscular action," and had designed his table and experiments to verify that hypothesis.

Faraday's studies into table tipping inspired others to start research. Each researcher approached matters in a different way, although they were all intent upon establishing whether the phenomena really occurred, and if it did what the cause may be.

The most detailed work was conducted by Professor Robert Hare in the USA.

Professor Hare's findings were published in 1855 in the book 'Experimental Investigations of Spiritual Manifestations,' probably the first serious work of scientific research produced. Hare was converted to Spiritualism as a result of his investigations.

Another major figure researching table tipping in France was Count Agenor de Gasparin, a French politician. He published 'Des Tables Tournantes' in 1854. The book described experiments he conducted in Switzerland under stringent test conditions.

He found that the movement and weight changes were genuine but rejected any spirit hypothesis, arguing that in a certain condition of the human organism, the will can act from a distance upon inert bodies, by other than physical effort. Gasparin also believed that in the same conditions an individual could communicate directly, albeit unconsciously with another.



The Mechanics of Table -Tipping

The common procedure begins by forming a circle around the table. Participants place their hands lightly on the table, with fingertips touching. Usually the room is lit up with a candle, or in complete darkness. Someone usually asks if spirit is present and hopefully the table show signs of animation. The first sign is a quivering motion under the sitters' hands; the quivering often increases until the table pulsates with energy. After the vibratory stage the table can jerk, tilt, stumble about, and sometimes it levitates.

At a recent Paranormal Meetup at Soul Searchers Spiritual Centre, the participants conducted an experiment using a card table. Initially after coaxing spirit to communicate for quite some time the table eventually responded. We discerned a slight shaking and then the table started moving slightly.

Of course the obvious explanation was that someone was pushing the table or the movement was a result of the ideometer effect which refers to the influence of suggestion or expectation on involuntary and unconscious motor behaviour, such as the movement of pointers on Ouija boards or the movement of pendulums and dowsing rods.

References:

<http://www.answers.com/topic/table-turning-1#ixzz2bO3Cf8bL>
<http://www.spiritualismlink.com/t1285-the-psychic-force>

Subterranean Sydney



The Concourse of St. James Station, opened in 1928.

Extract is from the book by Brian and Barbara Kennedy. (Subterranean Sydney (The Real Underworld of Sydney Town), Reed, Sydney, 1982. ISBN 0 589 50312 X). Copyright Brian and Barbara Kennedy and Reed Publishing.

Sydney has a number of little known railway tunnels. The oldest one was built under George Street in 1855 from the Sydney Railway Yard to Darling Harbour. A gap at Broadway let the smoke from the steam trains of those days escape. The tunnel is still in use.

Another old tunnel runs beneath Jubilee Park at Glebe. It forms part of the Metropolitan Goods Line which runs from Darling Harbour to Canterbury. The line was started in 1855

and completed in 1916. As its name implies, the line is used only for goods and, as no passengers travel on it, few people outside the railways know of its existence.

However, the line was known to thousands of American troops who landed at Rozelle Bay during the Second World War. A monument in the Rozelle Marshalling Yards is a reminder of those days.

A number of unused tunnels were built in the 1920s as part of Dr J. J. C. Bradfield's scheme for Sydney's transport. They include tunnels near Wynyard Station which were used for many years by trams. They are now used as a car park under the Menzies Hotel.

Short tunnels constructed in the 1920s around Town Hall Station were built in case

the railway system was extended at some future date when blasting would interfere with normal train operations. The police used one of these tunnels as a pistol practice range for many years. These days they are incorporated in the eastern suburbs railway system. In addition to these, other short tunnels for future extensions were also constructed on either side of St. James. These tunnels, however, are not used in the eastern suburbs network.

The Circular Quay end of the St. James tunnel was used during the Second World War as General MacArthur's headquarters before he moved his operations to Queensland. It is now used by the railways to store trains. The other tunnel extending under Hyde Park remains unused and tree roots have grown down into the roof from the park above.

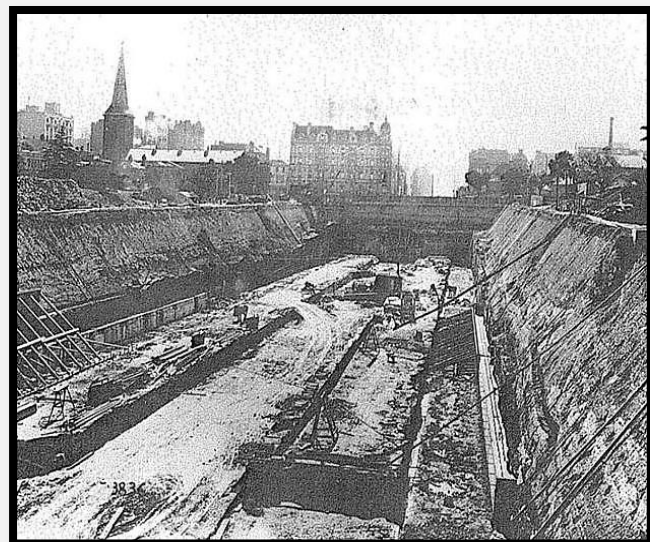
Another short tunnel built for future railway extensions at North Sydney Station also remains unused. Built as the start of a projected railway extension to Mosman, Manly, Narrabeen and Pittwater, it was completed about the same time as the Sydney Harbour Bridge which opened in 1932. As much as the railway extensions along the North Shore to Pittwater have been discussed, they have never been built.

THE CITY CIRCLE

The most familiar tunnels in Sydney are probably those of the City Circle.

Most of them were built by the cut-and-cover method in the 1920s. The first underground stations, Museum and St. James, were completed and opened to traffic in December 1926. They were electrified from the outset. This system was linked to the North Shore when the Sydney Harbour Bridge was opened in 1932. The City Circle itself was completed with the opening of the Circular Quay loop in 1956, but until that time turnbacks and crossovers had been used.

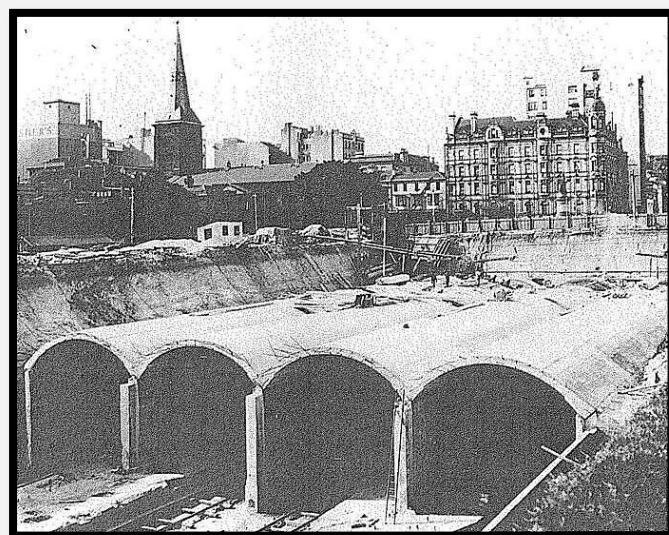
The City Circle is a complicated system. In one section there is a tunnel running on top of another for half a kilometre. Tunnels cross each other skew-wise at various places. In two Parts there are four tunnels running side by side on the same level.



Later work for the City Railway which was built mainly by the cut and cover technique.

For the most part, the route lay through public parks and under the roadways. The greatest difficulties were encountered where the tunnel had to pass under building foundations on the section between Central and Wynyard. On the eastern side of the city, the bulk of the tunnelling between Goulburn Street and St. James Station was through ironstone clay and shale, with the sandstone mainly below the middle section of the tunnel. This ironstone clay was easily worked but had to be closely timbered. The shale was not particularly hard and lay in blocks cut in irregular directions by narrow clay seams; however, the clay when wet was most treacherous by readily allowing the shale to become dislodged and become a load on the tunnel timbers.

THE EASTERN SUBURBS RAILWAY



City Underground Railway. 22 January 1925 (site under Hyde Park- St. James visible on left, nice Victorian building on current Supreme Court site).

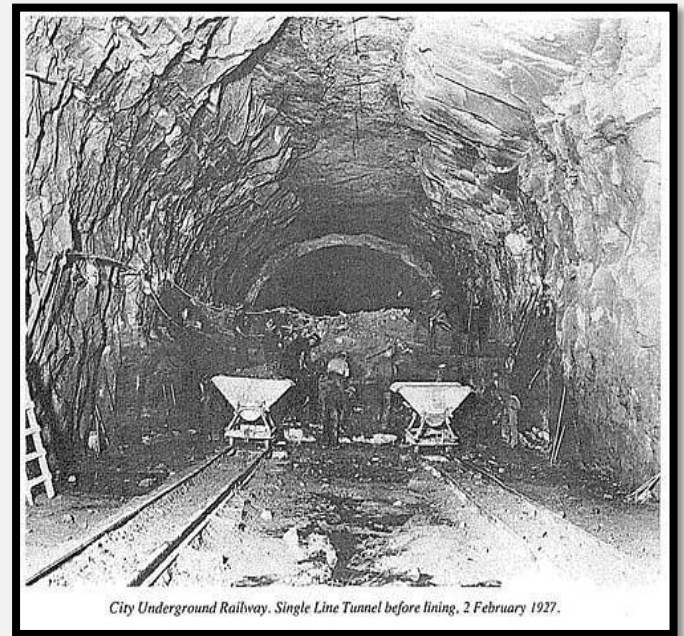
The prize for Sydney's most expensive hole in the ground undoubtedly goes to the Eastern Suburbs Railway which opened in 1979 after nearly a century of talking, planning, and delay. It cost a total of \$168 million. The tunnels alone cost \$50 million and the stations \$46 million.

The Eastern Suburbs Railways is a ten-kilometre line basically consisting of seven underground stations linked by tunnels (Redfern, Central, Town Hall, Martin Place, Kings Cross, Edgecliff and Bondi Junction); viaducts across two valleys (at Woolloomooloo and Rushcutters Bay); and one short aboveground section near Woollahra.

There are 1.5 kilometres of open-cut tunnels and seven kilometres of tunnels driven through rock. More than 1.5 million tonnes of sandstone had to be removed.

Australia's most modern commuter line now carries about 60 000 passengers a day or 18 million passengers a year as part of a bus rail transport system. The idea of a railway serving the Eastern Suburbs has inspired generations of planners and politicians and sparked off a score of Royal Commissions and committees of inquiry. Back in the last century, the Sydney railway terminal was called Redfern Station, which was located on what today is the southern side of Devonshire Street (Redfern Station, as we know it, was called Eveleigh). The first proposals for an Eastern Suburbs line were associated with demands that the rail terminal be extended into the city proper. But in those years, and for many years after, Sydney provided only a quarter of the population of New South Wales, and the politicians of the day were aware of what this meant to them. A typical view was that of John Sutherland, then Minister for Works, when, in 1868, he was asked to extend the railway from Redfern into the city. Although representing the electorate of Paddington (where the voters favoured a railway), he pointed out that the amount needed to build a railway from Redfern into

the city proper would be enough to extend the western line from Bathurst to Orange.



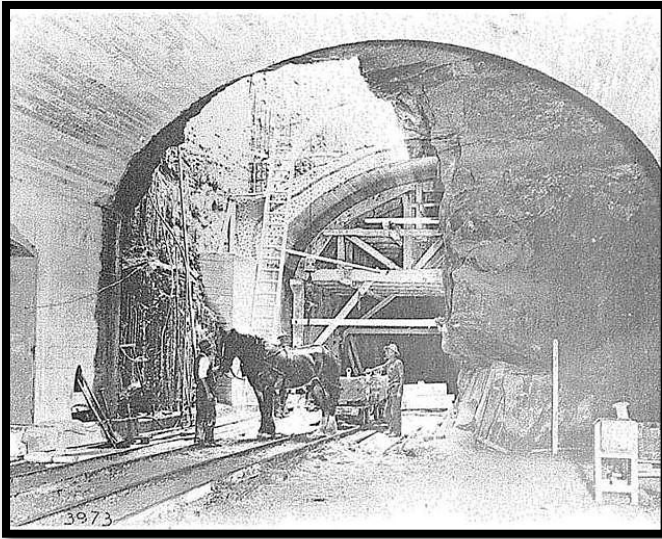
City Underground Railway. Single Line Tunnel before lining, 2 February 1927.

Sutherland's priorities were borne out by events; the railway reached Orange in 1877 but did not get to St. James until 1926.

Strong opposition came also from powerful country interests and the first suburban railways could only get parliamentary approval if they formed part of a line to the country. . .

The first suburban railway -fourteen kilometres from Sydney to Hurstville -was opened in 1884, and two years later it had reached Waterfall. The Strathfield-Hornsby line was opened in 1886 and extended to the Hawkesbury shortly after. Both these lines were proposed to parliament on the basis that they formed part of the Illawarra and Northern lines, but there was no way in which an Eastern Suburbs line could be part of a country service. Another limiting factor was the small population of the Eastern Suburbs -and numbers are important if a city railway is to be viable.

In 1871, the boroughs of Paddington, Woollahra, Waverley and Randwick contained only 11 000 people. Twenty years later, their population had risen to only 45 000. Waverley, for example, had shown a population increase of 300 per cent to 9000 over the ten Years to 1891, living in 1900 houses. But only one-fifth of its area had been built on.



City Underground Railway. double Tunnel near Circular Quay, 12 June 1931.

The first real attempt to persuade parliament to provide public transport for the Eastern Suburbs came with a draft bill of 1873 to authorise the building of a horse-drawn tramway from Sydney station to the city and to the Eastern Suburbs. This was passed on to a subcommittee for consideration and there it was lost; the fate of many a proposal over the years to come. But given the cost-saving option of building a tramway system to link the city with the Eastern Suburbs, the Government of the day was quick to seize it.

Despite opposition from private transport operators The Tramways Extension Bill was passed early in 1880. The first line from Liverpool Street to Randwick Racecourse was opened in 1880, with an extension to Randwick in March 1881 -the same month as the Darlinghurst-Ocean Street line came into service. The tramway network gradually spread across the suburbs, reaching Bondi Beach in 1894, Rose Bay in 1898 and Watsons Bay in 1909.

Despite the success of the trams, a rail link continued to be urged on a series of reluctant governments. In 1890 a Royal Commission proposed the building of a city terminal and the extension of four tracks into the city terminating at Circular Quay, with provision for an extension to the Eastern Suburbs. But no action was taken, nor was there any action after another Royal Commission made similar suggestions in 1896.



Central Station was built in 1906 but the agitation for a City and Eastern Suburbs railway continued, and plans continued to be drawn up and pigeonholed.

Finally, in 1915, parliament approved a proposal for a City and Eastern Suburbs railway drawn up by Dr J. J. C. Bradfield, the Chief Engineer of the Metropolitan Railway Construction. This entailed the building of the present City Circle loop, with provision for a rail link off this to the Eastern Suburbs via a tunnel beneath the Domain and a viaduct over Woolloomooloo to Kings Cross.

There were to be stations at Glenmore Road in Paddington at a site near Elizabeth Street, Woollahra, Bondi Junction, Waverley, Little Coogee (near Frenchman's Road, Randwick), Coogee (near High Street and Belmore Road), Daceyville, Rosebery and Waterloo linking with the Illawarra line near Erskineville Station.

The visionary Dr Bradfield (planner of both the Sydney Underground Railway and the Sydney Harbour Bridge) foresaw an extension from Bondi Junction to Watsons Bay and an inner loop between Central Station and Daceyville with stations at Moore Park (serving Sydney Cricket Ground, Sports Ground and Showground), and at Randwick Racecourse.

During the 1920s work continued. on the city railway 'to complete the Town Hall-Wynyard link in time for the opening of the Harbour Bridge but still the eastern extensions languished, despite regular demands for the work to begin. After paying for the city

railway, the Governments of the day could not find the funds to extend the work.

In 1947, an Act was passed authorising completion of the City Circle and railway extensions into the suburbs (including the eastern link) which provided for a station at Martin Place with the line going on a viaduct over Woolloomooloo to Kings Cross and eventually to Bondi Beach. Another line was to go out from St. James via Taylor Square and the Cricket Ground to terminate at Kingsford, with a further extension from Taylor Square via Paddington, Woollahra, Bondi Junction, Waverley, Bronte, and Clovelly to Coogee.

Excavations outside Central Station.



Dr Bradfield, designer of the City Railway (centre), with a group outside Central Station in 1926.

Work proceeded slowly until 1952 when a recession caused the Government to order a halt. By this time, tunnels had been driven from the Domain to a point beneath Rowe Street; the Chalmers Street excavation had been completed; tunnels driven a short distance from a shaft in Prince Alfred Park; and some of the work at Erskineville and Redfern had been carried out.

In 1962, the Government commissioned a report from overseas experts, De Leuw Cather and Company which recommended that the line be completed basically on the earlier route to Bondi Junction thence proceeding to Kingsford. Nothing was done on this report until 1967 when an Act covering

the proposal was passed and work actually began.

In 1976, the Government abandoned the section from Bondi Junction to Kingsford as recommended by the Urban Transport Advisory Committee and commissioned a report by an Eastern Suburbs Railway Board of Review. In November 1976 the Government accepted that Board's recommendation to proceed with the project with certain modifications to reduce costs. The cost-saving decisions announced at this time included the elimination of the proposed station at Woollahra and reduction of station concourse areas at Martin Place and Bondi Junction.

Not all of the work of the planners of the past has been lost in the development of the new railway. The stations are close to the locations envisaged by the engineers and designers long ago and the platforms at Town Hall Station which handle the Eastern Suburbs traffic were partly built by Dr Bradfield laid a century ago as part of his city and suburban system to cater for a new line he envisaged to serve the western suburbs.

The Eastern Suburbs Railway was one of the largest engineering projects ever undertaken by the New South Wales Government.

The route was determined to some extent by the undulating terrain of the eastern suburbs of Sydney and the need to avoid building foundations and poor ground material, where possible.

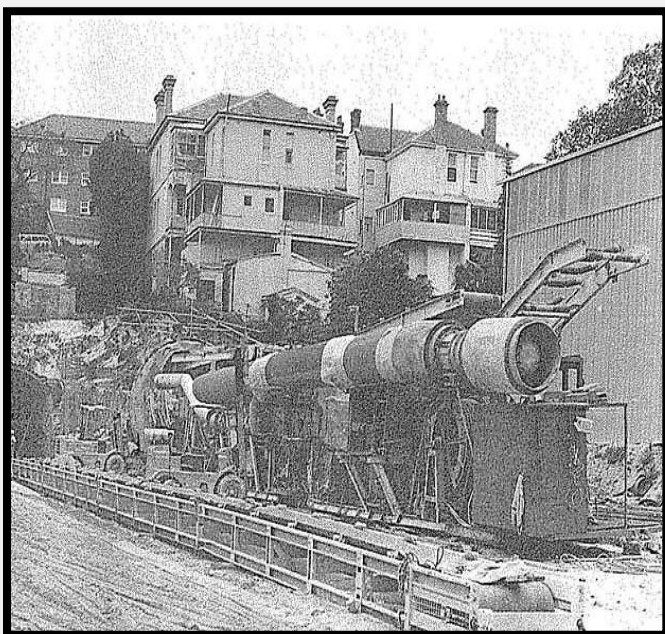
Erskineville is where the Eastern Suburbs Railway connects with the existing metropolitan rail network. The new line descends rapidly down a ramp (with a grade of 1/32) into twin-box tunnels extending 1.3 kilometres beneath Alexandria Goods Yard to Redfern Station. These tunnels were constructed by the cut-and-cover method because of the difficult ground conditions in this area of water-laden alluvial soil. Extensive sheet piling was required as this method was used at depths of up to sixteen metres. This work proved to be very difficult and expensive. Redfern Station platform, located fifteen metres below ground level, marks the point when it became practical to

use conventional means of drilling and blasting in the tunnelling works.

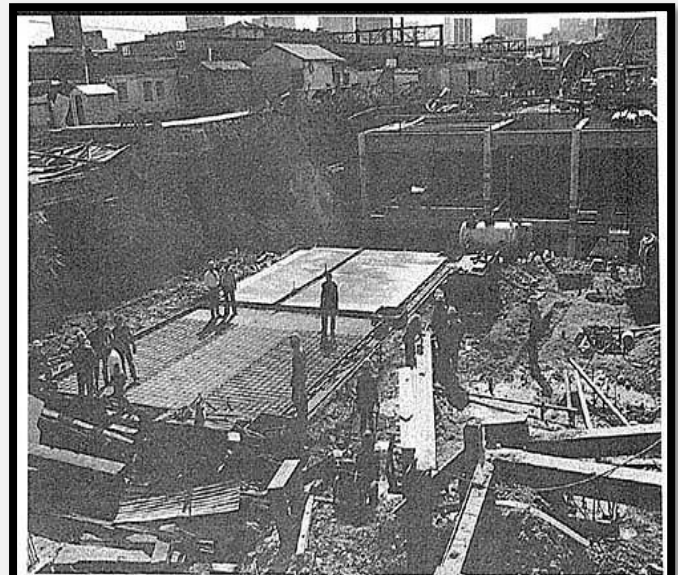
This method was used in the tunnels from Redfern to the Domain portal at Woolloomooloo and beneath Kings Cross. Generally, conventional tunnelling involved full-face firing of a 2.8 round (120 holes and up to two rounds per shift). Monitoring of ground vibration was necessary in most areas to protect buildings. The roof of the tunnels was usually supported with four metre rock bolts. The tunnels were finished with a concrete lining varying in thickness from 200 to 600 millimetres.

The section between Edgecliff and Bondi Junction was formed by the use of a 179-tonne tunnel-boring machine known as the "Mole". In principle, the machine consisted of a rotary cutting head pressed on to the tunnel face by a large hydraulic ram. The 4.5-metre diameter cutting head was driven by large hydraulic motors and gouged away the face at a rate of two metres per hour.

Equipment involved in these works included rock bolting systems for roof support, high-speed drifters mounted on hydraulic booms or air legs, millisecond delay detonators with mains voltage firing, truck mounted hydraulic drilling platforms, heavy earthmoving equipment such as loaders and rock buggies, concrete pumps, concrete immersion and form vibrators, steel formwork and concrete placing systems which allowed lining of the tunnels at rate of thirty metres per day.



The tunnelling work on the Eastern Suburbs Railway was speeded up by a tunnel-boring machine appropriately named "The Mole": shown here at the Woollahra Portal.



Before: An early construction photo showing the excavation beneath Chalmers Street for the new Eastern Suburbs Railway platforms.

After: Restored Chalmers Street with its attractively landscaped pedestrian boulevard above the Eastern Suburbs Railway.



Before: An early construction photo showing the excavation beneath Chalmers Street for the new Eastern Suburbs Railway platforms.

After: Restored Chalmers Street with its attractively landscaped pedestrian boulevard above the Eastern Suburbs Railway.

TUNNEL CONSTRUCTION:

Tunnels are usually wet areas and, consequently, must be drained. In the Eastern Suburbs Railway network, weep holes were left in the walls and the water drained to pump chambers located at the lower points of the system. These chambers up to fifteen metres below sea level have pumps which are automatically activated as the water level rises. The water is pumped to the surface and discharged into stormwater

drains. During construction of the line it was necessary to support building footings under the city and at Kings Cross. One column footing of the State Theatre building located directly above the crown of the tunnel was underpinned. This necessitated an inclined drive up to the footing and the excavation of a chamber around it. Steel beams were installed on each side of the footing on concrete pads clear of the tunnel and the footing was gradually picked up on needle beams supported by flat jacks.

A more complex effort was necessary at Kings Cross where the track above the station area was prestressed in order to minimise settlement when the arches were excavated. The first move was to install heavy steel beams and columns of flat jacks in the column drives.. The beams were surrounded in concrete and grout forced between the concrete and the rock. The flat jacks were pressurised and had the effect of raising the roof level about six millimetres. The centre arch was then excavated and lined and then the outer arches excavated and lined. The maximum final settlement recorded at street level was about 9.5 millimetres and no damage was caused.

Further construction problems were encountered where the tunnels crossed underneath the existing City Circle tunnels just east of Martin Place. Extensive steel supports were required to prevent subsidence of the overlying rock which is heavily stressed by City Circle train loads less than three metres above the new tunnels.

STATION CONSTRUCTION

The construction of the Redfern and Central Stations, located on the eastern side of the existing railway was commenced in the 1947-52 period. At that time, the stations were excavated by open cut methods and the steel frame structures of the stations were erected. When work ceased in 1952, the steel was left exposed; by 1967 these steel structures had corroded badly and major remedial work was required.

Whereas these stations were excavated from the surface down, the lower levels of Martin Place, Kings Cross and Bondi Junction Stations were excavated and lined by tunnelling methods. However, the concourses were constructed in excavations opened from the surface and are connected to the platform level by escalator shafts. Since it was not feasible in the Martin Place and Kings Cross areas to excavate using explosives, the concourse excavations were completed using large dozers with ripping attachments and hand-held pneumatic tools.

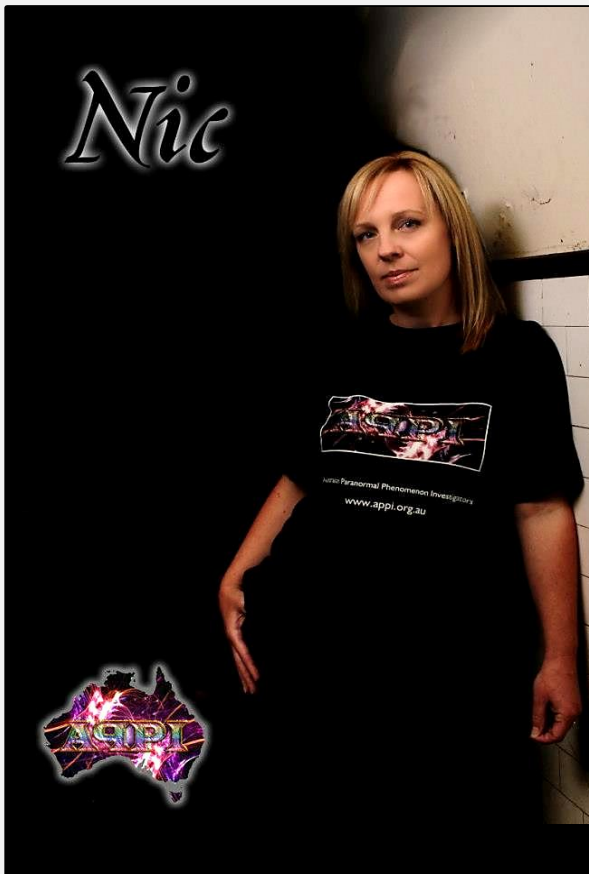
As the station structural works were completed, the finishing trades moved in. A high standard was demanded in this work through use of mosaic tiles and various coatings on the walls, suspended moulded panels for ceilings and floor surfaces of either terrazzo, exposed aggregate or rubber.

Reference:

<http://www.sydneyarchitecture.com/SUB/SUB-07.htm>

Did you know that the abandoned St. James tunnels were used as both air raid shelters and an operations bunker by the No. 1 Fighter Sector RAAF during World War II? The north-running tunnel was intended to keep civilians safe in the event of a bombing and the ruins of concrete walls that were built to withstand explosions (and thus stop the force of explosion from spreading to the next chamber) remain, as the soldiers who were charged with tearing down the walls left them behind. There is also 70 year old graffiti in the tunnel, another interesting remnant of the World War II soldiers who worked in the tunnels and left their regiment number and the date, most in 1942.

Reference: <http://www.travelblogs.com.au/articles/2817/1/The-Tunnels-of-Sydney-Abandoned-But-Far-From-Forgotten/Page1.html>



Why I became a Paranormal Investigator

By Nic Hume

I was recently asked why I was interested in Paranormal Investigating. It feels like I've shared this story a thousand times, but haven't. Not in detail anyway. I, like many in this field, have had my fair share of personal experiences. Being a logical person, and having a love of detective work, I've always been interested in finding out the reasons for such occurrences. Kind of like an annoying two year old...'But why?' is one of my favourite questions, and historical research is one of my obsessions.

My first paranormal experience was when I was 14. I saw my first full bodied apparition in my Aunts 100 year old home. I found out he was the butler, and I witnessed him doing his daily chores. The feelings I had at that time were of utter awe and total disbelief. I asked myself over and over if it really happened, yes it sure did...but how and why? Questions flooded my 14 year old head. Now folks, this was in 1988, no internet and no real idea how to research this kind of stuff, so I parked that experience in my 'paranormal experience vault'.

So life went on. I grew up (kind of). My fascination of the paranormal realm still

existed, but lay dormant for a while. Freaky coincidences were part of my norm; I thought they happened to everyone. Phone ringing, I'd know who it was. Think of someone, next thing they are knocking on the door. Vivid dreams that eventuate to real life a few days later. Countless people would come to me for advice, and my answers would come instantly without thinking. Whether my advice was adhered to or not, more often than not, I ended up being on the ball. 'Knowing' things on an intuitive level felt right, but weird. Even though I experienced this as part of everyday life, it still made me question – why?

Ghost tours were abundant for a while. I went on as many as I possibly could. Any place with reported ghostly activity felt like a magnet to me and I wanted in. Spooky, dark, dank places were awesome to sit in for a while, just to take everything in. But a tour is a tour, and there were limitations as the schedule had to be followed. The yearning to spend more time at a location was felt very strongly. I had two very memorable, eerie experiences on two great tours, at two wonderful locations. The first one was at Monte Cristo in Junee, NSW. I had what can only be described as an 'entity' making its way through me, it was so intense it woke me

as it whistled its way from inside my ear to outside my body. Three days later I had a brutally violent outburst, which left me and my husband quite shaken. It was very out of character. Possession? Perhaps. The second one was at the Macquarie Arms in Windsor, NSW. It was the middle of winter; I had about 5 layers of clothing on. We ventured into the cellar. I became extremely agitated and started tearing layers of clothing off, I felt like I was burning up. I couldn't breathe and began to panic. Again questions flooded my mind, I'm not asthmatic, what's happening? Gasping for air, I ran to the cellar doors leading to street level, and tried to breathe through the gap. Through my panic, I wasn't listening to the tour guide as she told the story of the convict rum smugglers who died in this cellar from mixing chemicals incorrectly. Experiences like these were like my first paranormal encounter. I was left in awe, disbelief, wanting more and so many questions. This is only a snippet of the freaky stuff in the 'paranormal experience vault'.

I have Obsessive Compulsive Disorder. I've self-diagnosed, as you do. If the shoe fits, left shoe on before the right, neatly aligned, laces all in the right direction, not twisted...its OCD! I'm like this with research. I have a fascination with history, genealogy, antiques and collectables. It categorises in my brain (in colour co-ordinated folders). The OCD helps when finding facts, because if you are this way inclined, you won't let something go until you are completely satisfied that it's right.

I set out on a 4 year quest, researching my family tree. One freaky coincidence in this research was that my maternal line has not ventured very far in 157 years. The suburb in which I now live is a stone's throw from where my ancestors settled in 1856. They are laid to rest in local cemeteries. They donated land and timber to build the tiny local church. It was also around this time I took a leap of love and enrolled in University to study Psychology. This helped me understand the intricacies of the mind, and how one becomes the person they are from all they have experienced. This knowledge is also something that has greatly assisted in my next adventure. Again though, I had more mental dilemmas to contemplate. Physical

versus spiritual, I've studied the physical and experienced the spiritual, what causes what and the ultimate question – why?



In early 2011, I met Peta (Peet) Banks. Creating Australian Paranormal Phenomenon Investigators (APPI) seemed the next logical step in my/our crazy lives. The connection with Peet has been one freaky coincidence after another. We can't help but come to the conclusion that this is meant to be, we are doing this for some Divine reason. Since APPI's birth we have had one hell of a paranormal adventure. Bringing all that I have in my paranormal experience vault, all that I've studied, and the skills I have developed along the way, and combining this with Peet's life thus far, is something that I can only describe as incredible. We started off as an all-female Sydney based team, and have since developed into a mixed team of 8, with each member bringing something unique to APPI. We have been privileged to investigate some hauntingly mysterious locations. We've been blessed with the reality of opportunities we would otherwise only dream of. Most importantly, we have built a successful Ghost/Paranormal Tour business, and have access to one of Australia's oldest functioning buildings.

So to answer the question of why I became a Paranormal Investigator...hmmm for the purpose of this article, and not to bore you with every single paranormal/ freaky/ coincidental experience I've ever had, I'd have to say that I was born to do this. To do anything contrary feels wrong, it's like the make-up of my being is guided to do this. It's a consuming thirst to answer the 'Why's' that I don't think I'll quench in this life time, but I'm going to love every minute, every lesson learned and live every experience to its fullest.



**Our Healers, Readers & other Practitioners can
be booked online**



**Soul Searchers
Spiritual Centre**

ABN 45 891 160 424

Suite 17, 3 Richmond Avenue
SYLVANIA WATERS NSW
AUSTRALIA 2224

Mobile: 0408 025 268 (Janine)
Mobile: 0424 166 645 (Steve)

E-mail:

sssc@spheresoflight.com.au

www.sssc.spheresoflight.com.au

BOOK AN APPOINTMENT



This is a 2 hour workshop about the chakra system and how it affects your energy centres. At this workshop you will learn some very effective techniques to help you clean and balance your chakras so that you can keep yourself happy, positive, calm and full of energy.

Chakra balancing creates a sense of equilibrium between your body, mind and spirit. When your chakras are returned to their natural frequencies, inner peace, wellbeing and happiness follows.

Janine Donnellan from Spheres Of Light is an Energetic Healer and a Reiki Practitioner and will be the facilitator of this workshop.

Where: Soul Searchers Spiritual Centre

When: 25th August 2013

Time: 3:00pm – 5:00pm

Cost: \$50

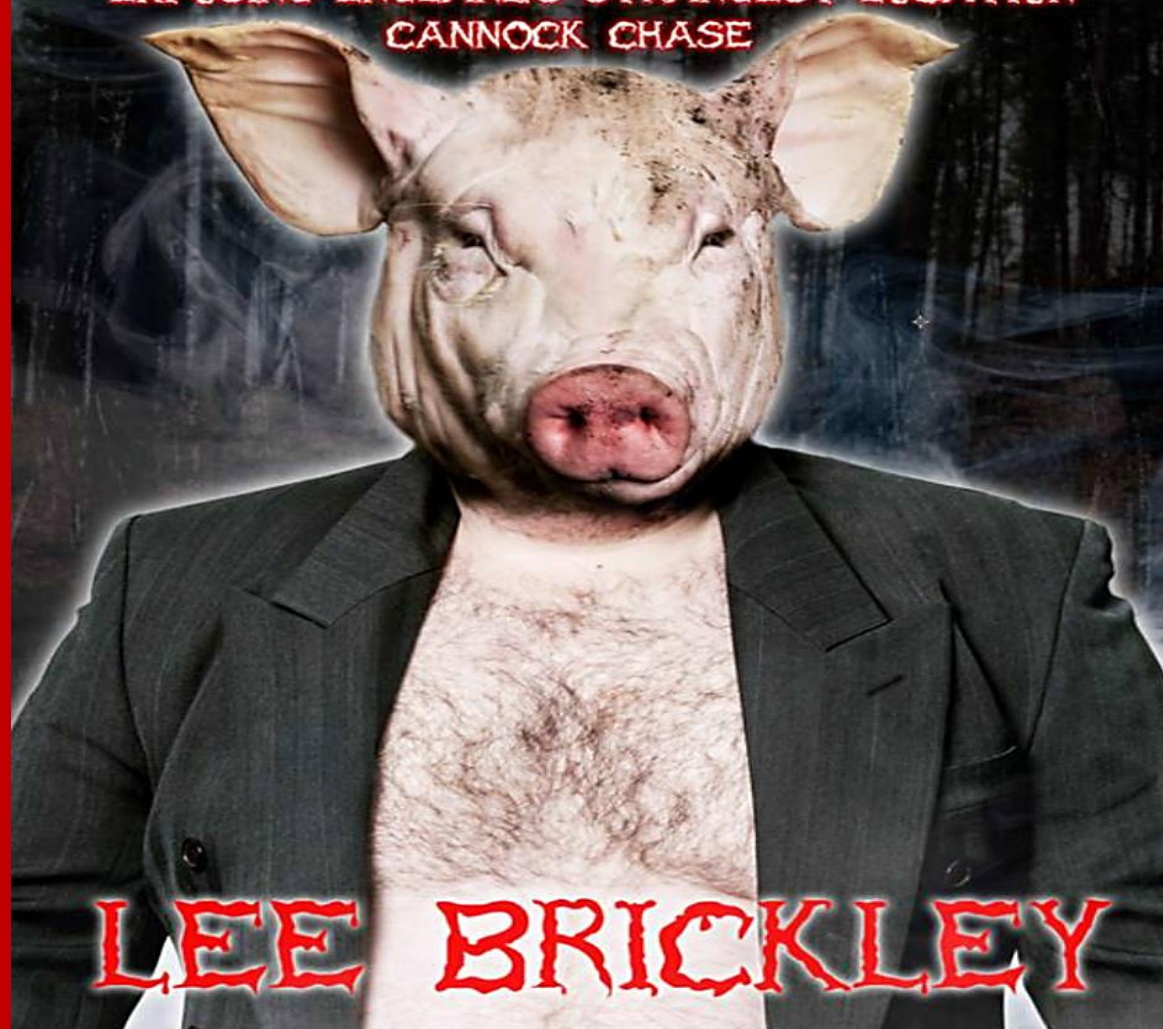
Bookings are essential so please use our [online booking form](#).

THE CONSPIRACY REVIEW

SUPPORTING ALTERNATIVE THINKERS

UFOS WEREWOLVES & THE PIG-MAN

EXPOSING ENGLAND'S STRANGEST LOCATION
CANNOCK CHASE



Lee Brickley's Terrifying New Book

UFO's Werewolves & The Pig-Man

(Exposing England's Strangest Location – Cannock Chase)

"UFOs, werewolves, orbs, more monsters than an old Universal Studio film. Cannock Chase has them all, and now Lee Brickley is bringing them all into your living room in his exciting new book." ~ Brad Steiger

Info:

The eternally mysterious woodlands of Cannock Chase in Staffordshire, England are known throughout the world as an entry point for bizarre and unearthly, paranormal phenomena. From werewolf sightings and spectral encounters, to documented UFO crashes and spooky urban legends, this supernatural portal area experiences more inexplicable activity than you even dare imagine.

In this book, Lee Brickley chronicles his investigation into the very location many researchers call "England's Strangest". With brand new sighting reports, spine tingling tales of gruesome monsters, and fresh information on the alleged top secret military connection that could be responsible for it all. Are you brave enough to find out what's really going down in the woods today?



About the Author:

Lee Brickley is a British freelance writer and publisher who works for

several magazines and websites. Lee has a particular interest in paranormal /cryptozoological themes and has been writing on the subject for many years. With appearances on many top radio shows, big things are on the horizon for this dedicated new author. You can contact him directly at: leebrickleyauthor@gmail.com

Or for more info on the mysteries and happenings on Cannock Chase, his paranormal blog can be found at:

www.paranormalcannock.blogspot.co.uk

Quotes:

"Cannock Chase has long been known as a UFO hotspot and a place where all sorts of other paranormal phenomena have occurred. It's one of the UK's most mysterious locations and might even get into a global Top 10 list of spooky sites, alongside such places as Area 51, Roswell, the Bermuda Triangle and a few others." - **Nick Pope, MoD UFO Project, 1991-1994**

"At first glance, Cannock Chase is a wonder to behold with its amazing and abundant natural beauty.

However, there is another part of Cannock Chase that dwells within the shadows. A place where madness has substance and nightmares have their own perverse allure. Cannock Chase is as mysterious as it is beautiful. It is a place where the veil is thin, allowing brief glimpses between this world and the next" - **Paranormal author Tim Swartz**

"A high plateau bordered by the Trent Valley to the north and the West Midlands to the south, the huge and picturesque Cannock Chase has been an integral feature of the Staffordshire landscape for generations.

There is something deeply weird about the Chase: it has strange and monstrous inhabitants in its midst.

Werewolves, large black cats, aliens, spooks and spirits, Bigfoot, wallabies, wild boar, and huge snakes have all been reported from within the depths of these mysterious woods..." - **Nick Redfern, author of many books including Monster Diary and Wildman**

"Cannock Chase has been the centre of many unusual sightings over the years. The Cannock Chase Beast' is probably the most legendary phenomena, but other supernatural horrors have been reported as well.

Unknown hominids and serpents reportedly haunt the infamous forest, creating caution for those who travel through it" - **Fortean author Lon Strickler;**

Cannock Chase is like a slice of the ancient medieval forests that covered England. Somehow this world within a world has survived in the heart of modern industrial Britain. Should we really be surprised that some of its 'residents' are so strange? - **Cryptozoologist Richard Freeman**

"Lee presents a fascinating and detailed insight into Cannock Chase and the mysteries that surround this region. His understanding of the area and strong local knowledge offer any reader and fan of the unexplained the chance discover why this area plays an important role within the UK's rich history of the unknown" - **Colin Hall,**

author of Fact or Fiction? The Paris & M6 Crashes

Details:

Title: UFO's Werewolves & The Pig-Man

Publication Date: July 2013

Author: Lee Brickley

Publisher: Yam Yam Books

ISBN:

Format: 8.5" x 5.5", 141 pages

Price: £9.99 UK (\$13.99 US)

Information:

<http://paranormalcannock.blogspot.co.uk/>
<http://leebrickley.weebly.com/>

Subjects: Paranormal

Rights: World

For Immediate Release

Media Contact: Lee Andrew Brickley

leebrickleyauthor@gmail.com

Phone: +447966147977

<http://leebrickley.weebly.com/>

<http://paranormalcannock.blogspot.co.uk/>

Interview with Allen Murdie of The Ghost Club by Peet Banks



The Ghost Club

Peta Banks from A.P.P.I interviewed Alan Murdie, LL.B, Barrister, Chairman of the Ghost Club of Great Britain & Head of the Spontaneous Cases Committee of the Incorporated Society for Psychical Research.

The Ghost Club was founded in 1862 and is the oldest organisation in the world, associated with psychical research. With no premises or paid staff, this wonderfully historic 'club' is made up purely of volunteers from around Great Britain, all of whom give their own time to arrange events for the rest of the members.

Peta: What fascinates me with your organisation is how long it has been around (I'm a bit of a history buff). What would be your favourite historical case from the archives?

Alan: There you ask a good question as the records of the Ghost Club are voluminous, so much so that a group of members having been working on them for several years. So it is very difficult to pin down a favourite

historical case with such an enormous variety and number to choose from. A personal favourite of mine, which the Ghost Club has looked into again in the course of the a visit to haunted places in the east of England some years back were the mysterious lights and claimed visions of Virgin Mary at Middleton in Essex reported by a priest by named Clive Luget in 1932-32. Middleton is just a few miles from the village of Borley, the site of the infamous Borley Rectory dubbed 'the most haunted house in England' Whilst Borley is remembered the alleged manifestations at Middleton have been forgotten. The other fascinating case from the same period was that of 'Gef -Talking Mongoose' a weird poltergeist case on the Isle of Man which intrigued Harry Price and Nandor Fodor, both Ghost Club members who wrote about it. This case is currently being re-examined and certainly is one of the weirdest on record and is fascinating from whatever angle one approaches it, whether psychical research, psychology or social history.

Peta: I know the group was originally founded by fellows at Trinity College, and included academia at Cambridge University. Do you

think this assisted in giving the club more credence in the academic community?

Alan: I don't think the Ghost Club ever sought credence in academic circles or beyond being a convivial and interesting place for those fascinated by the subject to meet. This is partly because the academic community at the time was very different to that of today. At the time colleges in Cambridge and Oxford were very conservative male institutions, wedded to reproducing orthodox ideas and practice and enjoying themselves in prescribed and traditional ways. One outlet was the formation of Clubs and societies concerning anything that interested them, almost as an escape from the cloistered environment. So in a way, the original formation of an all-male Club such as the Ghost Club would have been as seen as one an extension of college life, yet another student group or body and no wider significance.

Until the mid-19th century religion and science co-existed at an official level without any open conflict within their own spheres problems and with very little open dissent between them. Nor did psychology really exist as a discipline. However, new discoveries and theories in science were beginning to undermine literal interpretations and faith in the Bible as historically true (before this much important scientific work had been done by clergymen without any problems). A more militant form of materialism appeared that openly challenged religion and any spiritual belief. This in turn spread from the materialist philosophers who had arisen in the Enlightenment period in the 18th century

The arrival of spiritualism in Britain in the mid-19th century – arguably one of America's most successful exports – polarised both science and religion with supporters and opponents in both camps. It also occurred amid concerns that science was revealing an increasingly godless universe in which human beings were just mere biological machines. This disquiet concerns amongst some academics and led to the formation of the Society for Psychical Research to see if what we would today called paranormal phenomena could be studied scientifically

and if any conclusions could be formed about their nature and ultimate reality.

It can be said that the Ghost Club helped set the process going, but by the time the Society for Psychical Research was formed in 1882—drawing together some of the greatest thinkers and scientists of the time – many were already convinced of the reality of psychical phenomena and spiritual reality.

However, I believe that the greatest stimulant for the spread of spiritualism and the launch of psychical research was the high mortality rate throughout the 19th century. This meant that people in all classes were liable to die prematurely, from poor babies to Prince Albert, husband of Queen Victoria. Death was often sudden in the 19th century – hence all the cases of crisis apparitions it was possible to record. For those left behind neither science or established religion provided answers and that was why spiritualism flourished.

Peta: How has the club evolved over the past 151 years?

Alan: It has gone through a number of phases. In the 1860s it was in many ways similar to the more scientific investigative of groups today, in looking for haunted houses and for which it placed an announcement in The Times in 1862. But in the 19th century, generally speaking, you did not tend to go out to haunted houses to investigate ghosts, rather you invited spirits to materialise in the séance room. Modern ghost hunting as we would recognise it only really dates from the late 19th century; before the 1850s the ghost hunter is indistinguishable with the spirit-raiser or necromancer, and later typically becomes a full-blown spiritualist (many ghost hunts ultimately still end up as attempts to contact the dead). Unfortunately, Ghost Club records from this period are exceedingly fragmentary; it seems there was also a similar group the Phantasmagorical Society founded at Oxford University in 1879.

By the time the Society for Psychical Research had been formed in 1882 there had already been over thirty years of reports of mediumistic phenomena and there were many sincere believers. Amongst these were

some of the earlier founders of the SPR, including the Revd Stainton Moses who was a vice President of the SPR. Stainton Moses revived the Ghost Club in 1882 and quit as vice president of the SPR in 1886 stating he felt the phenomena already proved.

In fact, then as now, neither the SPR or the Ghost Club have collective opinions, both are open to sceptics and believers alike. Unfortunately, the SPR was adept at catching mediums cheating and the Ghost Club retreated away from this and became rather insular and intensely secretive body of believers who were already convinced of the existence of a spiritual realm. They kept extensive minutes with some extraordinary claims and stories recorded therein, but all too frequently they did not set down precise enough details which can be followed up today.

In some ways the Ghost Club at this stage operated as a mix between an occult society and a discussion group, being convinced that they were in touch with deceased members on an occasional if not frequent basis. Not surprisingly, the records of the Ghost Club were kept confidential and they admitted less than a hundred members in a period of 58 years. In doing so it also provided a confidential meeting place for various individuals who had formally abandoned psychical research, such as the physicist Sir William Crookes following a scandal over his involvement with a teenage medium named Florence Cook. Another controversial figure was Frederick Bligh Bond who was involved with a High Court case over his attempts to channel dead monks from Glastonbury Abbey in the course of archaeological work.

After World War I the Ghost Club began to attract some younger members who were to become significant in the next few years, including ghost hunters Harry Price and Nandor Fodor. The emphasis was shifting away from the séance room to parapsychology and ghost hunting as we would see it today. The meetings became more relaxed and more socially orientated. After an 18 month suspension in 1936, Price revived the Ghost Club as dining club for people wishing to hear a serious lecture on psychical research over dinner.

The Club lapsed for a period after the death of Price in 1948 but in 1952 some former members initially organised by the late Philip Paul (see his book *Some Unseen Power* (1985) for an account; a former President Peter Underwood has also written his version of events. Membership remained by invitation only up until 1993, but about 20 years ago it was decided by the older members to open up the Club to wider membership and today we pursue a wide range of activities and encourage serious research of all kinds and writers in the field.

Peta: In your opinion, what phenomenon is most often mistaken for paranormal activity, when it can be scientifically explained?

Alan: In my opinion and in terms of what gets referred to me, so-called 'orbs' and other photographic artefacts obtained on digital cameras. Like most people I was intrigued when they were first reported, around 1999. However, I think it has now been demonstrated beyond reasonable doubt by experiment by Philip Carr of the Ghost Club and other researchers such as Steve Parsons that have a natural explanation, arising from dust particles in the air and the fact that the flash unit is much closer to the lens with a modern camera. In fact, the whole issue of ghost photographs has been going round for over 140 years.

Peta: How do you think the popularity of paranormal investigation television shows has affected the way people look at this research?

Alan: Really these can't be called paranormal investigation television shows, they are for entertainment and no research is actually being done. One in Britain, one of the best known *Most Haunted* is correctly marketed as "Entertainment". Half the time they claim to know the answers already – e.g. they know its spirits at work before they even finished. If you are sure of that already, why bother investigating? I generally don't bother with them and these days I am only prepared to be involved with a small number of serious film makers and broadcasters.

Peta: In another 150 years, when The Ghost Club is 300 years old, what do you want the

futuristic society to remember most about your organisation?

Alan: I would like to think that the Ghost Club made a positive contribution towards the understanding of the paranormal as well as being of benefit it to all its members. In

particular that it also provided an open-minded and tolerant forum for discussion, encouraged researchers and work in the field of all kinds and maintained a connection with the ghost hunters and researchers of the past.

Be the Paranormal Investigator at this historic colonial institution

APPI

Australian Paranormal Phenomenon Investigators

To be held at
1 College Street, Liverpool

For bookings, dates, times and
other info contact:
www.appi.org.au



SOuL Searchers Parapsychology Certificate Course



This comprehensive course is ideal for those who would like an in-depth knowledge of the paranormal and would like to learn the necessary skills to become a Professional Paranormal Investigator.

All of the classes will be highly interactive and experiential, focusing on participation and engagement of the students. There will be practical exercises throughout the course and also interaction with SOuL Searchers Investigators. This course will be facilitated by Janine Donnellan who is the founder of SOuL Searchers and Steve Millard Case Manager of SOuL Searchers Paranormal Investigations.

For bookings and detailed information about this course please refer to the website:

<http://soulsearchers.spheresoflight.com.au>

or send an email to:

soulsearchers@spheresoflight.com.au

or contact Janine on 0408 025 268

SOuL.S.P.I.

SOuL Searchers Paranormal Investigations



soulsearchers.spheresoflight.com.au



One of the many things you will find unique about the SOuL S.P.I team is that we undertake our investigations from a shamanic perspective. One of the functions of a SOuL S.P.I member is to act as an intermediary between the physical and the spiritual realms. During our investigations we conduct in-depth evaluations of spiritual activity from our own unique perspective in order to help grounded souls move on to higher realms and to further our own understanding of the nature of spirits and the afterlife.

Our mission is to investigate all logical explanations of environments that are associated with paranormal activity. We use a common sense scientific approach to all our investigations but also have an open mind to all theories & methodologies. Our SOuL S.P.I team is composed of individuals with a variety of talents both scientific and psychic, including sceptics and believers.

Each investigation is conducted in a professional manner, addressing any concerns such as privacy, safety and security. Adherence to the wishes of the client is paramount in every case study.

Paranormal Meetups are now happening at Soul Searchers Spiritual Centre every 3rd Wednesday night of the month at 7pm.

The SOuL S.P.I team is based at Sylvania Waters and conducts paranormal investigations, house-calls, space clearings and removal of unwanted entities and entity attachments mainly in Southern Sydney, Sutherland Shire, St George district, Illawarra and surrounding areas of NSW, Australia.

For general inquiries or to request an investigation and clearing in your home please contact Steve, our Case Manager, at...

0424 166 645

soulsearchers@spheresoflight.com.au



Australian Paranormal Phenomenon Investigators

**To search for indisputable evidence of the survival hypothesis,
with our core objective being to investigate locations
of cultural importance, for the education and
enjoyment of the community.**

APPI is an all-female Paranormal Investigation unit, which is very unique in this industry. We bring many different levels to Paranormal Investigation from technical skills to an eye for a great photo, mediumship and psychic abilities.


We conduct Investigations with the highest level of respect and professionalism.

We approach each Paranormal Investigation with an open mind, and take all factors which could be construed as “Paranormal” into account - be they natural or scientific.

We collect evidence during an Investigation using state of the art equipment, which includes digital sound and video recorders, digital cameras, infrared thermometers and electromagnetic field meters. We also like to incorporate the spiritual aspect into our investigations, including a professional Spirit Medium on all we investigate.

Once all evidence during an Investigation has been compiled, we examine it methodically and rule out anything which has a logical explanation.

Any unexplained evidence we are left with could conceivably be a “Paranormal Phenomenon”. We at the Australian Paranormal Phenomenon Investigators are committed to providing the most comprehensive and least intrusive investigation possible.



Paranormal Equipment

The list below is of online stores and companies selling paranormal equipment here and in the United States.

Australia

Ghost Shack

Also one of the members of Eastern States Paranormal (E.S.P) Robert Coble is also selling ghost hunting equipment!

<https://www.facebook.com/pages/Ghost-Shack/208778072534059>

WDP - Western District Paranormal

WDP produces a small range of ParaProducts including IR illuminators, EM Pumps, Vibration Detectors and Electrostatic Field Detectors in Australia. WDP ParaProduct are available for sale to the public on a made to order basis. WDP ParaProduct is a sideline to a full time job for Craig (WDP's Founder), hence the made to order nature of sales, no stock is carried. IR Illuminators can be customised to individual customer requirement.

<https://www.facebook.com/#!/pages/Western-District-Paranormal/182634478488164>

Apparition Technologies

Providing top quality Ghost Hunting equipment with realistic price tags!

We are an Australian Based Ghost Hunting Equipment Manufacturer, specialising in IR Illuminators, UV

Illuminators, EM Pumps, Static Detectors, Vibration Detectors, Magnet Field Pumps and more.

https://www.facebook.com/?ref=tn_tnmn#!/ApparitionTechnologies

Overseas

The EMF Safety Superstore

Best selection, great prices on Electronic Paranormal Investigation Equipment
Offering EMF Meters, temperature Sensors, Motion and Vibration Sensors, Geophones, EVP Listeners, Ion and Geiger Counters and much more!

Website: <http://www.lessemf.com/ghost.html>

GhostStop - Ghost Hunting Equipment

We have supplied equipment for shows such as Ghost Adventures, Ghost Hunters International, Fact or Faked and teams around the world like yours. Just ask anyone who has used GhostStop and you'll hear our customer service and quality is unbeatable in the industry.

As paranormal investigators ourselves, use the equipment we have in stock, make some devices ourselves and test new gear regularly. We are happy to answer your questions via email, phone and even Facebook

<http://www.ghoststop.com/>

Ghost Hunting Source.com

At GhostHuntingSource.com we pride ourselves on providing you with a superior shopping experience; from your first click to the arrival of your desired Ghost Hunting and Paranormal investigation items. Our competitively priced Paranormal produces include all the most recent state-of-the-art tools that are a must when Ghost Hunting or conducting Paranormal Investigations.

Website: <http://ghosthuntingsource.com/>

Paranormal Groups within Australia

Below will be all the Paranormal Groups listed under each state. If you wish to be added to this list, please email accessparanormal@gmail.com

New South Wales

APPI - Australian Paranormal Phenomenon Investigators

The Australian Paranormal Phenomenon Investigators (APPI) are paranormal investigators who use a combination of scientific and spiritual methods to determine the existence of spirits around us.

Life experience, common sense and team work are our main instruments when investigating, and we enjoy working with other groups, in order to learn and develop our natural skills. We are open to any investigations, so please contact us for a confidential consultation.

<http://www.appi.org.au/>

Campbelltown Paranormal

Our team consists of sensitives, empaths as well as our skeptic. We investigate and document all aspects of the paranormal and we often unite with other teams on large investigations using specialised equipment. This includes full spectrum and IR cameras, still cameras and video, spirit boxes, EMF detectors and EVP recorders. We also specialize in house clearings as each member of our team has experienced hauntings and the feeling of being isolated and alone. We are local to Campbelltown and are always here to help!

<https://www.facebook.com/campbelltownparanormal>

Eastern States Paranormal (E.S.P)

Experienced Paranormal Investigative team dedicated to search for evidence of the paranormal and helping others with paranormal problems.

Friendship and honesty are important aspect of our team. Be sure to check out the website for other tours, our forum, photos and equipment!

<http://www.easternstatesparanormal.com.au/index.htm>

|

E.C.P.S - East Coast Paranormal Society

Our aim is to investigate places not for the purpose of labelling them as 'haunted' but rather as an opportunity to document and collect data to help us get a better understanding of the paranormal and to help others who are experiencing paranormal activity.

We do not think that everything that goes bump in the night is paranormal and we take a scientific approach to all investigations and will always try to debunk before we label something as paranormal. Our team of investigators are professional, dedicated, honest and reliable.

<http://www.facebook.com/?sk=lf#%21/pages/ECPS-East-Coast-Paranormal-Society/256240681066858?sk=wall>

Feminine Spirit Paranormal Investigators

Feminine Spirit is a paranormal Investigative team. Our teams vision is to provide our clients with professional and confidential service.

The girls in Feminine Spirit respect the sensitive issues that often arise when dealing with unexplainable events that can disrupt our daily lives, and believe that our clients' **well-being is of the utmost importance.**

Email: FeminineSpirit@hotmail.com.au

Facebook:

<https://www.facebook.com/#!/FeminineSpirits>

Ghost Study Australia

Ghost Study Australia is a Paranormal Investigations group based in the North/West NSW area of Australia since 2002. Ghost Study Australia Investigations are conducted free of charge and professionally using scientific methods and common sense in the hope to help our clients and prove or disprove Paranormal Activity.

www.ghoststudyaustralia.net

Email: dale@ghoststudyaustralia.net

Facebook <http://www.facebook.com/pages/Ghost-Study-Australia/153038111429450>

Haunted Australia

Our group is currently researching any locations brought to our attention and we are intending on traveling overseas end of this year to research some sites. Our location is just out of Sydney but will cover all areas.

Website: <http://www.haunted-australia.com.au/>

Hunter Paranormal

Hunter Paranormal Australian is dedicated and committed to the SCIENTIFIC, LOGICAL, UNBIASED Research and Investigation of paranormal phenomena. The goal of Hunter Paranormal Australia is to research, investigate, and document paranormal activity in an unbiased, logical, and scientific manner. Hunter Paranormal Australia advises that part proceeds from fees, paranormal investigations, introductory tours and donations etc. are directed towards the restoration of selected Pioneer Cemeteries, Historical Societies, Museums, etc within Australia. We also offer packages from an Introduction to the Paranormal to learning to be a Trainee Investigator.

Website <http://www.hunterparanormalaustralia.com.au/>

Lakes Investigators of the Paranormal

L.I.P.S is the brainchild of husband and wife team Nathan and Fay Johnson. As Lakes Investigators of

Paranormal Suggestion, we endeavour to find answers, both for ourselves and our clients.

Parramatta Paranormal Society

PPS (Parramatta Paranormal Society) is an organisation of Paranormal Investigators who focus on discovering the paranormal using scientific knowledge. We also like to maintain historical buildings and land. PPS was started by Sarah Sloan and Michael Sloan who also have a committed team who we appreciate and enjoy working with.

Based in Parramatta NSW we investigate throughout the state and we also conduct private investigations. PPS use a range of "Ghost Hunting equipment" to back up peoples experiences and encourage them come along and monitoring our investigations.

With the use logical theories we debunk things that occur on our investigations such as sounds and pictures so we can be sure that something is Paranormal rather than jumping to the conclusion that something is haunted.

PPS work with a medium who knows nothing about the location prior to the investigation so we can get an understanding on how the psychic mind works.
<https://www.facebook.com/pages/parramatta-paranormal-society/164927327119>

Southern Tablelands Paranormal Research Society

Southern Tablelands Paranormal Research Society (SAiNT-PRS) - A Team Of Paranormal Investigators Dedicated To Investigating Paranormal Reports From The Southern Tablelands And Beyond.
<http://saint-prs.blogspot.com/>

SOuL S.P.I

SOuL S.P.I (SOuL Searchers Paranormal Investigations) undertakes paranormal investigations from a shamanic perspective. The SOuL S.P.I team conducts all investigations in a professional manner, adhering to the wishes of the client; we are also compassionate to the needs of the distressed spirit. We are based in Southern Sydney, Sutherland Shire, the Illawarra & surrounding areas in NSW. ALL investigations are conducted free of charge and therefore all members are volunteers.

SOuL S.P.I also produces a quarterly Paranormal eMagazine.
<http://magazine.soulsearchers.spheresoflight.com.au>
<http://soulsearchers.spheresoflight.com.au>

Sydney South West Paranormal Investigators

We employ scientific and proven investigative methods to obtain indisputable evidence of the paranormal. We will investigate anywhere from private residence to historical sites, and this is at no cost to our clients. This service is free and always will be as it is our mission to help people in need and also educate about the paranormal world. Facebook page:
<https://www.facebook.com/SSWPI>

Sydney Spirit Stalkers

We are a Group of 4 Paranormal Investigators in Sydney's West area. Our team members specialise in, Tech & Equipment, Photography, Safety, Location Finding, Research and Mediumship.

We are always up for an adventure and love looking into haunted areas. We have come across some strange discoveries in various locations, which make us determined to continue our investigations.

If you have anywhere you would like us to check out feel free to have a chat to one of us. "Personal Experience Over Rules All Others Judgment"
http://www.facebook.com/gettingstarted.php?step=cont_act_importer#%21/pages/Sydney-Spirit-Stalkers/160614330659716

UFO and Paranormal Research Society

The society was established to provide the public with information relating to the paranormal world of the unexplained, no matter the type of phenomena. The society beckons the public to forward their own accounts of anything that seems bizarre or unusual so as to defy logic! The Society is an active, in the field group dedicated to pioneering the unexplained world.

The Society has now embarked on a project to deliver this material as recreations professionally produced whereby actors are cast into the roles of the characters and the original account from Australians that are investigated by the Society are put to film. This Series is called EERIE ENCOUNTERS and the first DVD, featuring the UFO phenomenon, is now available from the Society. The series will eventually go to air on TVS.

The Society actively engages the public on reports they give so as to lend credibility to the reports they give. Everything from Cryptozoology to ghostly apparitions is covered.
<http://www.ufosociety.net.au/>

Validate

Validate is an independent investigative body seeking key elements that may provide evidential support to certain paranormal related theories such as hauntings, alleged foreign intervention i.e. UFO phenomena and cryptozoology.

In order to authenticate claims, Validate will endeavour to gather bona fide data without relying on calculations or any conclusions drawn by other groups or organisations. This clean slate approach enables Validate to conduct its own studies without influence. All obtained information (raw data) can therefore be thoroughly scrutinised at Validate's best capacity.

In essence, Validate deals with highly controversial areas that are considered as fringe science. Here, even the most qualified scientists who have invested time and risked their academic careers to pursue phenomena research, find it extremely difficult to

understand and draw solid conclusions. Validate acknowledges these difficulties through experience. Although Validate operates on strict guidelines, it appreciates the fact that certain events are beyond our academic textbooks. In other words, Validate will not be dissuaded no matter how extraordinary the claim may be. Validate is also dedicated to assisting and coaching groups within the field with the aim of bringing unity to the paranormal (including UFOlogy) community.

<http://www.paranormalnation.com.au/>
or <http://www.projectufo.org/>

W.S.P.R - West Sydney Paranormal Research

West Sydney Paranormal Research (W.S.P.R) is a Not-for-Profit-Organisation who are a small group of hard-working, like-minded and dedicated researchers/investigators - striving to find the truth in claims of paranormal activity.

W.S.P.R is made up of professional team members and we operate on a 'logic first' approach to ALL of our investigations. With a wide array of equipment, our aim is to determine whether or not any paranormal activity is present in the location we are investigating.

<http://www.westsydneyparanormal.org/index.html>

Queensland

Australian Paranormal Investigators (API)

Australian Paranormal Investigators (API) are a small team of dedicated researchers primarily based in Brisbane, Qld. We operate on a logic first basis and approach from a scientific point of view and our combined knowledge and experience allows our clients the benefit of a thorough and in-depth investigation. We understand that not all things are explainable by science but our vast range of experiences allows us to provide our clients with the necessary support based on their needs.

Location: Brisbane and surrounding areas (extensive travel available from anywhere between Maryborough to Coffs Harbour)

<http://www.australianparanormalinvestigators.com>
Haunted Australia

Our group is currently researching any locations brought to our attention and we are intending on traveling overseas end of this year to research some sites. Our location is just out of Brisbane but will cover all areas.

Website: <http://www.haunted-australia.com.au/>

Brisbane Amateur Paranormal Investigators

We perform investigations using up-to-date technology and equipment. Think you have a haunting? We may be able to provide alternative explanations for phenomena, or capture proof that what you have is real. We can perform investigations of locations upon invitation to do so. We are a completely not-for-profit organisation and the cost of all our equipment and our time in both performing investigations and analysing

data is done at our own expense. All investigations are conducted with complete respect for the location as well as anything paranormal which may be present. Feel free to contact us via Facebook <http://www.facebook.com/BrisbaneAmateurParanormalInvestigators?sk=info>

or via email BrisbaneAPI@gmail.com

Down Under Spirit Team (DUST)

Down Under Spirit Team (DUST) was established in Sept 2012. DUST is based in South East Queensland, and is willing to travel up to 3 hours in each direction to help someone in need. DUST does not charge for investigations! DUST was formed with two clear objectives in mind, to investigate the paranormal, and to help people that are troubled by paranormal happenings. DUST will investigate any location necessary, businesses (private or public), private households, tourism locations, etc, etc. DUST will look to try and debunk any claims, or evidence found, and looks for common / native reasons for any evidence found, before looking to the paranormal. DUST believes that communication is paramount, and will always keep in contact with you before, during and after investigations.

www.dustinvestigations.com.au

Email: info@dustinvestigations.com.au

Ghosts-Inc

Ghosts-Inc are a Gold Coast, Queensland, Australian based group who have a goal to gather information that will lead to a better understanding of ghosts, hauntings and other paranormal activity. We also encourage people to share their stories with us, because a good ghost story combines real history and local urban legends!

<https://www.facebook.com/#!/pages/Ghosts-Inc/157842384226548>

Paranormal Paratek Queensland

Queensland paranormal investigations & historical researching. Paratek is a State Government registered, fully insured not-for-profit incorporated association.

paratek is committed to conducting successful paranormal investigations. We investigate the site history thoroughly before commencing any investigation.

Mission statement:- "Seeking Truth By Evidence". Utilizing state of art detection equipment used in this field of research within Australia. Paratek will scrutinize all obtained data carefully & thoroughly before a comprehensive report is presented on the conclusion of our paranormal investigation. Paratek is Queensland state wide & has undertaken several high profile heritage site investigations to date.

Web: <http://www.paratek.net.au>

South Australia

Celestial World Australia

Celestial World Australia was founded by Michael Barnett with the focus on a wide variety of new age areas such as Mediumship and Spiritual Healing. Michael runs New Age courses and also conducts paranormal investigations ensuring every case is kept confidential. The CWA team uses a variety of equipment for scientific purposes and approaches all cases in a relaxed manner. CWA also uses spiritual methods such as mediumship to assist in these investigations. www.celestialworldaustralia.com

Eidolon Paranormal

A South Australian Paranormal Investigation Team. Investigating hauntings, UFOs, Cryptids and everything else deemed "Paranormal". Eidolon Paranormal can also be found actively interacting within the community at SA Paranormal meet-ups.

We aim to find the truth about urban "ghost" legends. We also investigate private and business premises to advise clients if their building is subject to a haunting. Offering free paranormal investigations and advice on hauntings. Privacy and discretion and professional conduct is assured. Contact us at: eidolon@live.com.au www.eidolonparanormal.net

Murraylands Paranormal

We are Toni, Neil, Barry and Ann - a fledgling group of Paranormal Investigators based in Murray Bridge, South Australia. Please feel free to e-mail us at: mpi.sa.ghost@internode.on.net

Paranormal Field Investigators

We are a small group of researchers based in Adelaide, South Australia. Our group study, research and investigate most aspects of the paranormal. We have been interested in this subject, as individuals, for many years and some of us have been investigating for over 20 years. People who join our team consist of people with knowledge in such skills as photography, tech and electronics plus individuals who are prepared to sit and research the history of an area being investigated. All investigations are treated in a professional manner, with respect and confidentiality to all persons and properties involved. We try to conduct our investigations in a technical manner, relying on electronic equipment to monitor the situation. We are open-minded to different theories and methods as this is not an exact science. Our services are free of charge.
<http://paranormalfieldinvestigators.com/>

SA Paranormal

SA.Paranormal is a social group of people interested in all aspects of the paranormal. We will be meeting monthly for outings, such as ghost tours, cemetery visits, history tours, movies or for special guest

appearances by people involved with aspects of the paranormal.

MEET-UPS - S.A.P. Meet-ups are hosted by the teams of Eidolon Paranormal and Adelaide Spirit Chasers. They are frequented by many local S.A. teams who are willing to share their stories. We have guest speakers and presentations about equipment, spiritual items and other paranormal related subjects. The meet-ups will now be hosted at The Clare Castle Hotel in Kapunda South Australia one Sunday a month - dates and times will be posted on the wall here and at <http://www.eidolonparanormal.net/saparanormalmeetups.htm>

The Paranormal Guide

The Paranormal Guide (TPG) is a new website that explores the world of the paranormal through different forms of multimedia presentation. The bulk of the website is devoted to the videos the TPG team have created focussing on different aspects of the paranormal. All topics of the paranormal are covered ranging from Ghosts and Hauntings to UFO and Aliens, Cryptozoology to Unsolved Mysteries, True Crime is also covered too. As well as video presentations TPG has a fortnightly podcast to keep people up to date with what the team is doing as well as presenting topical discussions and answering listener's questions. TPG also has a user forum through which people can share their experiences, information and tell a good story or two. The video and Photo galleries are open for all to browse as well as to upload their own images and videos. Soon TPG will begin hosting their public meetings for like-minded individuals for a more personal contact experience. Although The Paranormal Guide is based in South Australia it really is a nation wide website covering all states and territories. The Paranormal guide is:
Ashley Hall: Founder and Head Administrator
Debbie Williams: Lead Researcher and In the field reporter
Pavle (Paul) Tipic: Lead Investigator and Tech Head
Tash MacDonald: Sensitive and Forum Administrator
www.theparanormalguide.net
www.facebook.com/theparanormalguide

R.U.P.I - Riverlands Unexplained Paranormal Investigators

This is a new paranormal group we are called R.U.P.I
Kathy Messenger - Spirit Medium
Richard (whisper) - Ghost Whisperer
Mandy Scidone - camera and EVPs
Peter Nikolis - Technical director, Researcher and jedi master
<https://www.facebook.com/groups/183859181726929/>

Fleurieu Paranormal Research

We are a small group of individuals with an interest in the paranormal. Fleurieu Paranormal Research is a non-profit organisation undertaking research into possible paranormal activity on the Fleurieu Peninsula. Our mission is to investigate and research paranormal

activity in and around the Fleurieu Peninsula. We are searchers of evidence, seekers of truth, and analysts of beliefs. No scientific proof of life after death? No scientific proof that there isn't either. For more information email fleurieuparanormal@y7mail.com or phone 0479 184 180.
Website: <http://fleurieuparanormal.blogspot.com.au/>

Victoria

Australian Ghost Adventures

AGA is a group of paranormal enthusiasts with a diverse background in paranormal research and investigation. We use scientific and alternative methods in our investigations and we do not charge a fee. Collectively we have over 40 yrs experience in the paranormal field. We use various techniques including the "scientific method", wicca, dowsing, alternative (including use of pendulums, crystals). We also use reputable psychic mediums. Modern technology and equipment is used, (including Thermal imaging), to help quantify any results. As a whole this family owned company has many collective years of paranormal investigation experience. Our award winning production team has been enlisted to help collaborate and document our findings on yet to be released DVD's. The team has extensive experience and have been involved in the A/V industry collectively over 50 years. The latest technology in HD cameras are used, helping to give the viewer a real life ghost hunting experience while sitting in the comfort of their own home. Members of both the AGA teams (Alternative and Technical), have had the pleasure of being involved in Australia's high rating cult paranormal television series (Haunted Australia).

We are a group of paranormal investigators and Psychic mediums. We do investigations, tours, seminars and media productions. We also run tours of haunted locations. We are currently running tours of The Old Geelong Gaol in Geelong Victoria and conduct special events such as sleepovers, halloween tours and private group bookings for 20 people and over.

Website: <http://www.ausghosts.com.au/>

Australian Paranormal Society

The Australian Paranormal Society (A.P.S) - founded and owned by Bill Tabone and Amanda Wright-Tabone, and co-ordinated by Bill, Emily Tabone and Will Tabone - run a professional team of paranormal investigators who are located in Melbourne, Australia.

The A.P.S - is a 'not-for-profit' organization - that consists of a professional team of individuals 'with varying skills and a broad range of expertise' who are dedicated to researching and understanding unexplained phenomena worldwide - and we provide a 'free onsite assessment' for residential and commercial customers -Just email us with your enquiries.

The Australian Paranormal Society does not encourage nor will it condone trespassing at any time

and it will only investigate a location if proper permission has been granted by the appropriate authorities.

The A.P.S aim is two-fold: to create a team of 'dedicated paranormal researchers' as well as an extensive online resource centre that will cater for varying levels of interest and understanding.

Our mission is to extensively investigate and empirically document all types of 'unexplained phenomena' within Australia, utilizing the most advanced equipment and methodologies.

We approach each reported incident with sensitivity, fully respecting the person's worldview and religious beliefs, while maintaining full confidentiality. Any evidence gathered on location will remain private and confidential and any public disclosure would remain at the full discretion of the client.

An A.P.S. requirement of any investigation is that a full 'debrief' and feed-back session will be scheduled with the client to whom all findings will be made public.

The A.P.S will initially consider various rational explanations for alleged 'paranormal phenomena' and will continue to assist our clients until a satisfactory conclusion about any phenomena is reached.

All investigations proceed with no preconceived assumptions and will remain unbiased by allowing any evidence uncovered to guide the direction of the investigation.

Occupational Health and Safety issues affecting the A.P.S team are critical during any investigation. If for any reason members of the A.P.S feel the investigation should cease for personal or safety reasons, the investigation will be postponed or terminated.

Through their investigations the A.P.S hope to gain a more concise understanding about the nature of unexplained phenomena through extensive data collection, experimentation and empirical documentation

The A.P.S. also offers a specialised team for the clearing of premises/spirit rescue. This team is separate to the investigative team although still part of the A.P.S. This team will only attend when a thorough investigation has taken place. All contact is through our email.

We are open to any questions the public may have and to support other fellow paranormal investigation groups.

Our aim is to also build a more open and united paranormal community.

An evidence analysis service for the public and other P.I. groups is also available.

Website: www.australianparanormalsociety.com

Facebook:

www.facebook.com/australianparanormalsociety

Email: aps_contact@rocketmail.com

Australian Scientific Paranormal Investigations (ASPI):

We are a team of investigators who will not jump to the conclusion that something is paranormal until we feel we have substantial evidence to back it up. Jason

Dickson is one of the founders of Australian Scientific Paranormal Investigations, and has had many years of paranormal experiences, since his teens. Jason has Diplomas/qualifications in a few fields that come in really handy on our investigations. Sound, Photography, Video and Electronics, he has done it all! From working on movies, having his music published and now he runs Apparition Technologies, which is becoming one of the world leaders when it comes to equipment in this field. We look forward to seeing what he comes up with in our quest! We only use the best and latest equipment on the market to help validate what you're experiencing. We are located in Melbourne Australia, and if you would like us to investigate premises, or be referred to a team in your area, please feel free to message us.

Facebook:

<https://www.facebook.com/pages/Australian-Scientific-Paranormal-Investigations/145995632219300>

Colonial Paranormal

Colonial Paranormal is Victorian based and was born out of our interest in the Paranormal, and wanting to know about things that go bump in the night! We got started on investigations in 2009 after going to the Point Cook Homestead. We have so far done investigations at Old Melbourne Gaol, Old Geelong Gaol, Point Cook Homestead and J Ward with other groups and are now trying to strike out on our own. We'd love to find more like-minded people who want to go on private investigations in Melbourne and around Victoria. We're not a tour group, nor are we out to make a profit or stand on the toes of existing groups. We'd just like to do our own thing. We have all our own gear and all we need is people keen to join us on investigations. By creating Colonial Paranormal we'd like to share the costs involved with getting into places. Most places charge a fee to get into, if we can split that with 10 people it's way cheaper than a tour. You can email us at melissa@colonialparanormal.com or visit the website www.colonialparanormal.com or you can find us on Facebook "Colonial Paranormal".

Carmar Paranormal Investigators

Carmar Paranormal Investigations is a non-profit group founded by Marty and Caroline Veenstra. Our aim is to show people around us and the media of strange occurrences while also debunking the fake or natural phenomenon. We document all paranormal and physical evidence and present our findings to our client. Our aim is to help to achieve balance and bring peace back into your environment. We at Carmar are experienced Paranormal Investigators who have 20 years collective experience between us in the field of Paranormal Disturbances and deal with both investigating and dealing with paranormal activity. Our team of Psychics, Mediums and Sensitives use with our combined abilities help locate and communicate with the spirits that are troubling your home or business. Over the years we have had great success in dealing with Paranormal Phenomena combining a Scientific and a Spiritual approach to our investigations.

Website:

<https://www.facebook.com/carmarparanormalinvestigations/info>

Historical Haunts Australia

Historical Haunts Australia is an experienced and professional team of Paranormal Investigators located in Melbourne, Australia. Our team approaches each case from a scientific viewpoint in an attempt to explain any disturbance being experienced. Every circumstance is unique and is dealt with accordingly whether it is natural or unexplained.

HHa are happy to investigate large or small sites some of which have included historical, industrial, business and private residences. All investigations are FREE OF CHARGE. Investigations can be kept CONFIDENTIAL at request of the client.

Website: <http://www.historicalhauntsoz.com.au/>

Independent Paranormal Investigators

Independent Paranormal Investigations (IPI) are a small Melbourne based group dedicated to finding answers of the paranormal. Working with other groups and individuals, we help both the living and the dead to find the answers they need to find some peace and move forward. We investigate many different locations including homes, business, public and private establishments in Victoria, Australia and Internationally. We do not charge for our services, if we are unable to help we can put you in contact with someone in your area that can.

Website www.paranormalinvestigations.com.au

Email: enquiries@paranormalinvestigations.com.au

or find us on face book at

IndependentParanormalInvestigations

UPI - Undercover Paranormal Investigations

UPI - Undercover Paranormal Investigations is a paranormal group located in the south eastern suburbs of Melbourne dedicated to research and investigation into the unknown. We have been investigating locations for 5 years and I myself (Lionel) have experienced paranormal events all my life. Our investigations have yielded some very strong evidence and our investigation style is a mix of a scientific approach and feeling. We are currently looking to investigate any site with valid claims of the paranormal and would love to be contacted if anyone is interested in hosting us for an investigation.

[http://www.facebook.com/pages/Undercover-](http://www.facebook.com/pages/Undercover-Paranormal-Investigations-UPI/365375210142514)

[Paranormal-Investigations-UPI/365375210142514](http://www.facebook.com/pages/Undercover-Paranormal-Investigations-UPI/365375210142514)

Victorian Phantom Hunters

Victorian Phantom Hunters are a paranormal investigation team located in Victoria Australia. We investigate the paranormal very seriously using scientific equipment and a diverse team of experienced and trainee investigators. Victorian Phantom Hunters works alongside some other great teams including Investigating for Lantern Ghost Tours. Troy Williams is the founder and lead researcher and after some personal experiences that left many

unanswered questions earlier on in life started reading and studying the Paranormal. In 2005 Troy formed Victorian Phantom Hunters and after a decade of continual research and investigating we are dedicated to helping people who are going through difficulties with any kind of paranormal problems specialising in personal cases and Homes. We are all continually learning and growing in the field and will work with any team supporting paranormal unity. Victorian Phantom Hunters do not charge for anything including investigations, advice, referrals.

Website: <http://www.victorianphantomhunters.com/>

Facebook: <https://www.facebook.com/pages/Victorian-Phantom-Hunters/217188481630466>

Western District Paranormal (WDP)

WDP is a paranormal investigation group, located in Miners Rest Victoria. Currently sporting a team of 3 dedicated investigators, WDP uses both logic, specialist equipment and scientific methods to investigate and question paranormal phenomenon across Victoria.

WDP's investigative services are free to the community and they can be contacted via email. WDP also produces a small range of ParaProducts including IR illuminators, EM Pumps, Vibration Detectors and Electrostatic Field Detectors. WDP ParaProduct are available for sale to the public on a made to order basis. WDP ParaProduct is a sideline to a full time job for Craig (WDP's Founder), hence the made to order nature of sales, no stock is carried. IR Illuminators can be customised to individual customer requirement.

Website: <https://www.facebook.com/#!/pages/Western-District-Paranormal/182634478488164/>

Western Australia

The Albany Paranormal Research Society

The Albany Paranormal Research Society consists of a team of investigators who aim to document and record paranormal activities using tried and tested scientific methods. Our aim is to help people who experience unexplained phenomena to regain peace of mind. We are a professional team that will treat our clients with respect and discretion, and attempt to ascertain the true cause of their unexplained activity.

If you have an unexplained activity that you would like to talk to someone about or arrange an investigation, please browse our website for further information and contact us via our contact page. A team member will be in contact with you as soon as possible.

Email: albanyparanormal@hotmail.com or Website: <http://www.albanyparanormal.com>

Twilight Paranormal Investigators

At T.P.I we are all very spiritual our Team consists of sensitives and an empath/medium. We have combined a healthy balance of Spirituality and a scientific approach to our investigations. Our mission is to seek out the truth and help people, all our investigations are free, non-judgmental and handle with the utmost care

and respect, At T.P.I we believe in all things paranormal. Email: trishmoulton@y7mail.com
<http://twilightparanormalinvestigations.yolasite.com/>

West Australia Paranormal Research

We endeavour to raise the profile of this field of research in the local community and be there for those people who have issues that no one else wants to touch. If you have issues within your home or work place that are out of the normal or in some cases quite disturbing, we are here for you whether it is just for someone to talk to without being laughed at, or if you prefer we can send out investigators to have a look around and see if the case warrants a full team investigation. We work with reputable local psychics who can offer guidance and support; we also have worked with a local "exorcist" in the past when the situation required it. We are working to find an understanding of what this thing called the "Paranormal" actually is and how it can affect the living world around it.

Website: <http://www.waparanormal.com.au/home.html>

Perth Ghost Hunters

Formed in 2002 Perth Ghost Hunters offer free investigations to owners of both business and residential with reported paranormal occurrences to find out whether they have a haunting or not. We cover north to Geraldton, east to Kalgoorlie and south to Albany. We use some of the latest ghost hunting technology available and also own a Flir thermal camera in an attempt to get the best evidence.

We respect people's privacy and offer fully private investigations without bringing any unwanted attention to the owners and location of the haunting.

Contact us at perthghosthunters@yahoo.com

Twitter - <https://twitter.com/#!/PerthGhosHunter>

Website - <http://www.perthghosthunters.webs.com>

Tasmania

Team Strigois Paranormal Investigators

The name of our team came from Romanian mythology, where the strigoi are the troubled souls of the dead rising from the grave. We investigate known and unknown locations around our historic state. We investigate all types of locations including private residences in a respectful and professional manner; our goal is to capture phenomena using cameras and other recording equipment. Team Strigois never charge for any investigations and can also do confidential investigations as well. Our other aim is to put another spin on tourism in Tasmania and hopefully generate extra interest in the wider world and encourage more visitors to our beautiful state Tasmania.

Team Strigois are Drew McClelland, Jodie Newton and Mike Phillips. We investigate cases of Hauntings, UFO's, Urban Legends and Cryptozoology free of charge, confidential or published on our site.

Website: <http://teamstrigois-unnatural.com/>

Carmar Paranormal Investigators

Carmar Paranormal Investigations is a non-profit group founded by Marty and Caroline Veenstra. Our aim is to show people around us and the media of strange occurrences while also debunking the fake or natural phenomenon.

We document all paranormal and physical evidence and present our findings to our client. Our aim is to help to achieve balance and bring peace back into your environment.

We at Carmar are experienced Paranormal Investigators who have 20 years collective experience between us in the field of Paranormal Disturbances and deal with both investigating and dealing with paranormal activity.

Our team of Psychics, Mediums and Sensitives use with our combined abilities help locate and communicate with the spirits that are troubling your home or business. Over the years we have had great success in dealing with Paranormal Phenomena combining a Scientific and a Spiritual approach to our investigations.

<https://www.facebook.com/carmarparanormalinvestigations/info>

The Paranormal Team

Team Paranormal Australia is a group of like-minded people seeking the truth about the paranormal and bringing it to the world in a documentary styled show played exclusively on YouTube. The group has done investigations in to several private residences and most notably the Penitentiary Chapel Historic Site where evidence of the famous spirit Ivy's ghost was captured in the form of footsteps after one of our cameras mysteriously turned off.

<http://craziwolfmedia.com.au/>

<http://www.youtube.com/user/TeamParanormalAus>

feel is in your imagination.

Using scientific analysis equipment amongst other tools we can come to your home, business or anywhere you feel that there may be something present and make a detailed assessment.

Whether you are curious or concerned we are here to help. We will always act with compassion and complete confidentiality. Whilst we are friendly and client focused we consider our research to be of the highest standard and a great deal of care is taken whilst gathering information.

Wraith Paranormal Investigation also works with the Launceston Paranormal Society and they assist with investigations bringing not only experience and technical equipment but a very high standard of investigation but also a strict method and practice.

Although we are located in Launceston we will travel if necessary. The statewide service is free of charge.

Website: <http://wraithinvestigations.com/>

Disclaimer

Please note that groups listed here are not endorsed by Soul Searchers. As a matter of precaution it is recommended that people make all necessary enquiries prior to engaging any group or attending any activity.

Soul Searchers reserves the right to decline or remove any group from the directory without cause and without notice.

Wraith Paranormal Research and Investigation

Here at Wraith Paranormal Research and Investigation we know that not everything you see, hear, smell or

Workshops, Courses and Events

If you are conducting a workshop, course or an event on the paranormal and you would like them listed then send an email to: soulsearchers@spheresoflight.com.au and accessparanormal@gmail.com

Workshops, Courses and Events - QLD, NSW & VIC

Newcastle Ghost Tours

Day Tours

Package One: Fort Scratchley Tunnel Tour and Monet's Lunch Day Tour

Date: To be confirmed at time of booking

Time: TBA (but during the day) and runs for approximately 3 hours. Minimum 15 people.

Location: Fort Scratchley, Nobbys Road, East Newcastle, NSW

Price: Adults at \$40 per person, Children (12-16) and concessions at \$35 per person (includes all costs for site entry and lunch).

http://www.newcastleghosttours.com.au/?page_id=212

This package includes a visit to the Fort Scratchley site and a 1 hour historic tour conducted by the volunteers at the Fort followed by arrival at Monet's Restaurant at the James Fletcher site on Watt Street Newcastle for a

relaxing lunch including tea/coffee and cake with a talk about the history of the site to conclude your morning out. For more information email info@newcastleghosttours.com.au

Package Two: The “LOCK UP” Museum Tour and Monet’s Lunch Day Tour

Date: To be confirmed at time of booking
Time: TBA (but during the day) and runs for approximately 2.5 to 3 hours. Minimum 15 people.
Location: Fort Scratchly, Nobbys Road, East Newcastle, NSW
Price: \$30 per person.
http://www.newcastleghosttours.com.au/?page_id=212
This package includes entry into our historic Lock Up Gaol/Museum located on Hunter Street, Newcastle. This facility was used at the town’s lock up from the 1860’s and contains the original cells open for inspection. The volunteers will show you through and discuss crime and punishment in the early years of the township. This will be followed by arrival at Monet’s Restaurant on the James Fletcher site with lunch in the second oldest building in Newcastle including tea/coffee and a talk about the history and significance of the site to conclude your morning out. This package includes your donation to the Lock Up site, lunch and speaker charge.
For more information email info@newcastleghosttours.com.au

Weekly Tours

East End

Date: Thursday, Friday, Saturday or Sunday
Time: 7:15pm (runs approximately 2.5 hours)
Location: TBA
Price: \$45.00 (includes Devonshire tea!)
http://www.newcastleghosttours.com.au/?page_id=64
Do you have a group of friends who would like to share a very unique experience?
A private tour gives you and your friends more time to explore the old haunts of Newcastle’s East End.
Join me in a walk around the first streets of the settlement of Newcastle. Maybe you will encounter the ghost of James Hannell, publican and auctioneer on Hunter street! We might also take you up to the site of Gaol where public hangings took place. We could walk past the site of the old Royal Hospital where the ghost of the matron can still be seen walking the old corridors. We will definitely be visiting the old Cathedral cemetery! You never know what old soul we shall encounter along the way. Have your camera ready! Call on 0411 357519 or email – info@newcastleghosttours.com.au

History and Mystery Day Tours

Date: Weekly on Thursdays only
Time: 12:00pm (runs approximately 2 hours)
Location: Muster point - The Lock Up on Hunter street, Newcastle NSW (between Bolton street and Watt street)
Price: \$45.00 (includes Devonshire tea!)
http://www.newcastleghosttours.com.au/?page_id=64
Historic walking day tours are available for small groups (minimum four people). Bookings are available on Thursdays only – this allows us entry into The

United Servicemen’s Club on Watt street and includes a Devonshire Tea at haunted “Monet’s” Restaurant at James Fletcher. Tours commence at 12 noon taking about 2 hours.

Twilight Historic Walks at West Wallsend Cemetery

Date: Please contact us for availability
Time: 6:30pm to 8:30pm (daylight savings time)
Location: TBA
Price: \$35 per person
http://www.newcastleghosttours.com.au/?page_id=45
Newcastle Ghost Tours has worked for over six months with Lake Macquarie City Council to secure permission to conduct respectful and informative tours at “Westy” Cemetery. Tours will be available for group bookings of 8 or more people.
Join us as the last rays of sun dip behind the mountain and learn about the gravedigger whose spirit still oversees the goings on of the cemetery, visit the grave of an early convict buried there and much more.
Call Renata mob: 0411 357519 or email info@newcastleghosttours.com.au for any future group bookings and all enquires.

Investigation Nights at Miss Porters House

Date: Sunday 25th August
Time: 7pm start for Monday 25th February and Sunday 28th April. 7:30pm start for Monday 17th June and Sunday 25th August.
Location: Miss Porter’s House – King street, Newcastle West, NSW
Price: \$55.00
http://www.newcastleghosttours.com.au/?page_id=63
We have very special permission to conduct paranormal investigations at Miss Porter’s House – situated in King street Newcastle West. Herbert Porter and his family moved into their new house in 1910. His two daughters Ella (born 1911) and Hazel (born 1914) remained single and lived in the house until Hazel’s passing in 1997.
The Edwardian terrace house contains 100 years of collectibles, 1909 – 1940 furniture, unique architectural features as well as the ghosts of family members, including Mr. Herbert Porter himself, who has stayed on in spirit to take care of his beloved home. Your night will commence the Muster point in front of Miss Porter’s House directly across the road from McDonalds King street Newcastle West. It will include an historical overview of the area including Cottage Creek which was the most remote “civilized” point of the township of Newcastle and the house standing on what was known as “Lock’s Paddock – a stonemason’s yard. Learn aspects of paranormal investigating from an intuitive viewpoint. Learn how to heighten your psychic abilities and become more sensitive to the energies around you. You will have plenty of time to explore, take photos and stake out some of the rooms with us and listen for things that WILL go bump in the night! We may even have another “spirit board” session and connect with the ghosts of the house.

Ghost Tour of the Civic Theatre

Date: Wednesday 7th August
Time: 7:30pm to 10:30pm
Location: 375 Hunter Street, Newcastle NSW

Price:\$60

<https://www.facebook.com/events/473050512783021/>
Join us on our annual Civic Theatre Ghost Tour and take the opportunity to see areas of the theatre not usually open to the public. Our guide Richard Laws is a long term employee of the Theatre and knows all of its secrets (and he stayed with us during our overnight investigation earlier this year!). Hear the ghost stories associated with areas of the theatre and have time at the end of the night to explore for yourself.
You can put your name as coming but full payment is required to secure your spot.
Email info@newcastleghosttours.com.au to book in.

East End Tour

Date: TBA

Time: July to September - 7:00pm, October - November 7:30pm

Location: East End of Newcastle, NSW

Price: \$45.00

http://www.newcastleghosttours.com.au/?page_id=55
Private Tours for small groups available (3 people minimum – flexible to suit your needs but no entry into sites are available on private tours).

Please be aware that you will be walking up hills during this tour and need sensible footwear. We will operate the tour in MOST weather conditions – if it is drizzling (slightly raining) the tour will be going ahead so bring an umbrella/raincoat as these are not supplied.

We will take you down the first streets of King's Town (later renamed Newcastle).

Walk the path of the first convicts sent to hard labour, hear the true stories of gruesome murders and untimely deaths. Visit what remains of the oldest cemetery in Newcastle.

See one of Newcastle's best kept secrets – the oldest building in Newcastle. Listen to the history of the old Police Lock Up and roam through the cells. See the padded cell where one inmate took his life into his own hands!

Bring a torch and camera – you may catch one of the poor souls that still haunt this end of town by surprise...or they might just follow us around for the night wanting to see what we get up to (it happens all the time).

*Tour charge includes entry into all heritage listed buildings, staff member payments (not employees of Newcastle Ghost Tours) and any council fees that are incurred.

A percentage of all of our tour charges goes back to the community! We make donations to the Heritage Trust which then forwards the money on to help with the immense expense of keeping these historic sites in order and well maintained for our enjoyment and for that of future generations.

Get a group together and join us on a ghostly tour of the East End of Newcastle!! The tour will include entry into the LOCK UP Museum on Hunter street.Call 0411 357 519 or email info@newcastleghosttours.com.au

Stanley Park Sleepover

Date: TBA

Location: Stockton House: 77 Fullerton Cove, Fullerton Cove - just outside of Stockton on the road to Nelson

Bay- you will be turning left on the roundabout where the sign says "Fullerton Cove".

Price: TBA

Newcastle Ghost Tours is very pleased to have secured this amazing homestead dating back to 1897 for an overnight sleepover.

Arrival will be in the afternoon of Saturday approximately 4pm with a chance to look around and enjoy the location. We will enjoy an easy dinner together and then you will have the rest of the evening to explore the grounds and rooms at you leisure.

Dinner and breakfast are included and departure time will be at 8.30 am Sunday morning.

You may bring sleeping bags etc if you wish to try and catch some zzz's and also any snacks. Tea/coffee with also be available.

Maximum number is 20 people. A non refundable deposit of \$25 is required to secure your spot. Join us by emailing info@newcastleghosttours.com.au for more details.

Tomago House Torchlight Tour

Date: Saturday 24th August

Time: 7.00pm (parking on the grounds) till 10:00pm

Location: Tomago House, 421 Tomago Road, Tomago, NSW

Price: \$65 per person (a late night supper will be served after the tour)

<https://www.facebook.com/events/225366667603948/?ref=3>

Join us in a torchlight tour of this historic home and chapel conducted by the volunteers and friends of Tomago House with plenty of time to go exploring and take photos.

We only have a capacity of about 20 people for each tour date so please consider your payment will confirm you booking. Currently we only have one date for this event- another will be released as soon as it is approved by the Committee. Thank you for considering supporting Tomago House and Newcastle Ghost Tours in this initiative.

Miss Porters House - Intensive Investigation

Date: Sunday 25th August

Time: 7:30pm to 9:30pm

Location: King street, Newcastle West

Cost: \$50

http://www.newcastleghosttours.com.au/?page_id=63

So you've been to Miss Porter's House? Everyone that comes along always says they wish they had more time in the house - well here you go. We will spend the whole of the time IN THE HOUSE.

Why Monday night? Because its the QUIETEST night of the week in that end of town.

We will open this up to 10 people max.

If you are after your next opportunity to explore and investigate in another historic and active building join me on this night.

Civic Theatre

Date: Wednesday 7th August

Time: 7:30pm to 10:30pm

Location: 375 Hunter St, Newcastle, NSW

Cost: \$60 per person

Link:

<https://www.facebook.com/events/473050512783021/>

Join us on our annual Civic Theatre Ghost Tour and take the opportunity to see areas of the theatre not usually open to the public. Our guide Richard Laws is a long term employee of the Theatre and knows all of its secrets (and he stayed with us during our overnight investigation earlier this year!). Hear the ghost stories associated with areas of the theatre and have time at the end of the night to explore for yourself. You can put your name as coming but full payment is required to secure your spot. Email info@newcastleghosttours.com.au to book in.

Fort Scratchly Night Time Tunnel Tour

Date: Wednesday 28th August

Time: 7:30pm

Location: Nobbys Rd, Newcastle East NSW

Cost: \$45 per person and \$35 for children under 16 years

<https://www.facebook.com/events/179279478915504/>

We are back at Fort Scratchley to be taken down into the tunnels by the volunteers from the Fort - come support this amazing site in Newcastle and wander through the tunnels after dark!

This tour starts at 7.30pm and finishes around 9.30pm with light refreshments.

This tour is suitable for younger children

Cost is \$45 per person and \$35 for children under 16 years.

True stories about life at the Fort and those who were keeping our city safe from invasion during WW2.

Email info@newcastleghosttours.com.au for payment details

Parramatta Female Factory Tour

Date: Saturday 31st August

Time: 4:30pm to 9:00pm

Location: Parramatta NSW

Cost: \$30 per person

<https://www.facebook.com/events/447100062052332/>

This will be a guided tour of the outside of the old Female Factory.

Judith Dunn the local historian will be showing us places like the Crime Class working area, exercise yard, Matrons Quarters and Punishment Yard and telling us about the lives of the women.

Even though we cannot get inside the buildings I think this will be an excellent experience and Judith will share some of her known ghost stories and gothic tales.

Please note!!!

We won't be able to go inside any buildings but I am told that the property has a 5 acre footprint so much to stop and see and we get to also spend time ghost hunting at the end of it.

The Lock Up Intensive Extended Investigation Night

Date: 28th September

Time: 7:30pm to 12:00am

Location: Newcastle NSW

Cost: \$60 per person

<https://www.facebook.com/events/207568116067147/>

The Lock Up Museum on Hunter street is the old Police Lock Up with male and female cells and an exercise yard. This evening will start at 7.30pm and finish at midnight. You will have time to take part in

activities provided for learning and honing your psychic skills so it's a perfect night for those new to investigating. Also we will have plenty of opportunities for your own investigations and vigils throughout the evening.

Groups are welcome to join - number of participants will be kept to around 15 people.

Please email info@newcastleghosttours.com.au for more info and to book in.

Cost includes tea/coffee and light refreshments.

The Lock-up Intensive Investigation Night

Date: Saturday 17th August

Time: 7:30pm to 12:00am

Location: 90 Hunter Street, Newcastle NSW

Cost: \$60 per person (includes tea/coffee and light refreshments)

<https://www.facebook.com/events/397136420396723/>

The Lock Up Museum on Hunter street is the old Police Lock Up with male and female cells and an exercise yard. This evening will start at 7.30pm and finish at midnight. You will have time to take part in activities provided for learning and honing your psychic skills so it's a perfect night for those new to investigating. Also we will have plenty of opportunities for your own investigations and vigils throughout the evening.

Groups are welcome to join - number of participants will be kept to around 15 people.

Please email info@newcastleghosttours.com.au for more info and to book in.

Ghost Shack

The Paranormal Investigator Experience

Date: Friday 9th August, Friday 13th September, Friday 11th October

Time: 10:00pm to 1:00am

Location: 1 Scenic Head Drive, Manly NSW

Cost: \$77

Link: <http://www.qstation.com.au/tours/extreme-ghost-tour.html>

16 people, divided into 2 groups of 8, led by experienced paranormal investigators Anne or Rob. Spend the night actually investigating and gathering evidence - this night is not about stories. We just use the top of the line equipment and teach you the correct way to use it.

Various MEL meters, k2s, shadow detectors, vibration detector, Ovilus x (Ovilus 3 on order!!!), full spectrum cameras, IR lights, EVP sessions, dowsing rods and MORE. At the end of the night, the evidence collected is analyzed then presented to the patrons. Don't miss your spot for this unique experience!

Ring Kelly at Q Station and enquire now. Generally 2nd Friday of the month (or on demand). Bookings are essential.

UFO-PRSA

Monthly Meeting

Date: TBA

Time: 6:45pm to 10:15pm

Venue: Campbelltown Arts Centre, 20 Camden Road, Campbelltown, NSW

Price: Members \$7, non members \$12 (Tea, Coffee, biscuits provided). For more information go to <http://www.ufosociety.net.au/>

Australian Paranormal Phenomena Investigators (A.P.P.I)

Ghost Tours at Casula Powerhouse

Date: Saturday 10th August, 14th September, 26th October, 16th November

Time: 8:00pm to 10:00pm

Venue: Casula Powerhouse Arts Centre, 1 Casula Road, Casula NSW

Cost: \$45 per person

Link: <http://www.appi.org.au/casula-powerhouse-arts-centre.html>

Walk through the Casula powerhouse Arts Centre and grounds, reliving the stories of paranormal activity. Including light supper.

Paranormal Investigation Nights at Casula Powerhouse

Date: Please contact box office to arrange a paranormal investigation night

Time: 10pm to 7:00am

Venue: Casula Powerhouse Arts Centre, 1 Casula Road, Casula NSW

Cost: \$90 per person

Link: <http://www.appi.org.au/casula-powerhouse-arts-centre.html>

4 hour duration (which includes the 2 hour Ghost Tour)
Using viewing monitors, EVP and ghost box sessions, ghost meter pro, dowsing rods, pendulums and experimental techniques, APPI will attempt to find evidence of paranormal activity within the Casula Powerhouse Arts Centre grounds.
Includes light supper.

Spooky Sleepover at Casula Powerhouse

Date: Saturday 28th September

Time: 10pm to 7:00am

Venue: Casula Powerhouse Arts Centre, 1 Casula Road, Casula NSW

Cost: \$150 per person

Link: <http://www.appi.org.au/casula-powerhouse-arts-centre.html>

The Paranormal Investigator Sleepover Nights include a tour of the Casula Powerhouse and grounds, reliving the stories of paranormal activity and a brief workshop on what a paranormal investigation entails.

Using a variety of equipment, you will conduct detailed experiments, in an attempt to capture evidence of the paranormal. Equipment includes:

- Ghost box sessions
- Digital voice records to attempt to capture spirit voices (EVPs)
- Ghost meter pro
- Infrared video cameras
- REM-pods
- EMF (Electromagnetic Field) Meters
- Plus other miscellaneous equipment.

Spend the entire night in a wonderfully creepy location, locked down in the dark for you to enjoy.

A light supper and breakfast is provided. Tea and coffee available all night.

PLEASE NOTE: Bring your sleeping gear (sleeping bag, mat, pillow etc), any paranormal equipment you may wish to use and munchies to keep you energised throughout the night.

Paranormal Investigation of Liverpool TAFE

Date: TBC

Time: 9.30pm - 12.30pm

Venue: Liverpool TAFE, 140 Biggie St, Liverpool NSW 2170

Price: \$65.00

Link: <http://appi.org.au/liverpool-tafe.html>

Walk through Liverpool College and grounds, reliving the stories of paranormal activity.

Brief workshop on what a paranormal investigation entails, with handouts.

Various equipment provided.

Then YOU investigate!

Includes light supper

Paranormal Investigators Sleepover at Liverpool TAFE

Date: TBA

Time: 9.30pm - 7.30am

Venue: Liverpool TAFE, 140 Biggie St, Liverpool NSW 2170

Price: \$150

Link: <http://www.appi.org.au/liverpool-tafe.html>

Brief workshop on what a paranormal investigation entails, with handouts.

Using viewing monitors, nightvision cameras, laser grids, dowsing rods, emf detectors, thermometers, spirit boxes and motion sensors, find out who is still occupying this old hospital.

Includes light supper & light breakfast

For tickets, head over to <http://paranormalsleepover-eorg.eventbrite.com>

Australian Paranormal and Spiritual Expo

Date: Saturday 21st September 2013

Time: TBA

Venue: Parramatta Town Hall, 182 Church Street, Parramatta

Price: \$100 for VIP

<http://www.australianparanormalandspiritualexpo.com/program.html>

The workshops we will be running, go through a range of different topics. They being:

- A workshop on Parapsychology
- A vibration raising exercise to assist in contacting spirits
- Discussions on Lost Souls, Attachments & Dimensional Realities, which will incorporate a hands on element
- A demonstration on equipment technology and some stories of experiences these investigators have had
- A talk on UFOlogy, by a well known UFologist
- Tales of the sordid history of Sydney (and Australia), by one who knows it better than most...VIP tickets include:

1. Entry into the Expo.
2. A guaranteed seat at every workshop.
3. A dedicated floor, just for you - including the balcony overlooking the Expo. This is JUST for the VIPs.
4. A gift bag valued at \$50 (and growing), with all kinds of goodies inside.
5. A meet & greet at the end of the Expo.
6. A specialised VIP lanyard.

SOuL Searchers Paranormal Investigations Monthly Paranormal Meet Ups

Dates: Third Wednesday of every month.

Time: 7:00pm

Venue: Soul Searchers Spiritual Centre, Suite 17, 3 Richmond Avenue, Sylvania Waters

Price: \$10

<https://www.facebook.com/events/461427340593374/>

SOuL S.P.I is holding regular monthly paranormal meetings to discuss all things paranormal, to conduct research and experiments and to organise paranormal investigations.

SOuL S.P.I is a paranormal investigation organisation that regularly assists individuals who are experiencing paranormal phenomena in their homes as well as conducting regular Parapsychology Certificate classes. SOuL S.P.I has been featured in the Daily Telegraph, Mania Magazine, The Sun and the St George & Sutherland Leader as well as appearing in the USA series of My Ghost Story and 2UE radio.

Australian Paranormal Research Group Monte Cristo Investigation

Date: Sunday 6th October

Time: 5:00pm to TBA (morning)

Venue: Monte Cristo Homestead. 1 Homestead Lane, Junee, NSW

Price: \$300 (includes dinner, accommodation and breakfast)

Link:

<https://www.facebook.com/events/347924542003748/>
Sunday October the 6th (Monday 7th is a public holiday for NSW).

Investigation not a tour!

We need a minimum of 10 people to make this happen and a maximum of 15.

Price include exclusive access to the homestead and outdoor areas, Dinner and Breakfast and your Accommodation.

Please note that rooms may be shared with others.

We shall be there from around 1pm to look over the place.

You are more than welcome to bring your own equipment and we will have equipment for you to use as well (NO OUIJA BOARDS, SAGE OR CRYSTALS ALLOWED)

Come and join us by securing your spot through purchasing only.

There are 2 ways for payment:

1. 3 monthly payments via paypal for \$100 per month. please click this link if you wish to pay by the month.

https://www.paypal.com/cgi-bin/webscr?cmd=_s-xclick&hosted_button_id=A6RFTVMB7FZRU

2. 1 payment of \$300 via paypal. please click this link
https://www.paypal.com/cgi-bin/webscr?cmd=_s-xclick&hosted_button_id=K55MHCL885Y3U

Australian Ghost Adventures Old Geelong Gaol Ghost Tours

Date: TBA

Time: 8:00pm

Location: Cnr Myers and Swanston Street, Geelong VIC

Price: Ghost Tour (90 mins) \$30 adults - \$25 concession - \$20 children

(aged 8 to 15.... please note, customers under the age of 18 must be accompanied by an adult) \$90 family (2 adults, up to 3 children) Investigation Tour for 2 hours is \$40.

<http://www.geelongghosttours.com.au/bookings.php>

Are you brave enough to join us as we investigate and tour one of Geelong's most haunted buildings? Many stories have been told about its deceased inhabitants and their present day appearances. Experience the last few steps of former prisoners from their cold, dark condemned cells to the gallows where they were hung for their crimes.

Even today, people talk of the strange feelings they've had of ghostly apparitions, from condemned prisoners walking aimlessly about, to bodies still swinging from the Hangmans noose. Do you have what it takes to become part of these stories; to experience the sights and sounds of Ghostly encounters. Come along and "Dare to be Scared!" On our Ghost Tour.

Aradale Ghost Tours - Ararat Lunatic Asylum

Date: Fridays and Saturdays

Time: 8pm

Location: Heath Street, Ararat, VIC

Price: 3 hour investigation tour - \$70

Link: <http://aradaleghosttours.com.au/bookings.php>

Very limited seating.... Paranormal investigation!

Explore buildings never been shown to the public. 10 people group maximum.

Imagine... 5 buildings not otherwise open to the public.

Want to go ghost hunting?

Ararat Lunatic Asylum is the ultimate!

Top range equipment provided, or bring your own.

Phone 1300 856 668 to book!

Email: info@aradaleghosttours.com.au

Aradale Lunatic Asylum - Sleepover events

Dates: Friday 9th August, 6th September, 4th October, 1st November, 6th December

Time: TBA

Location: Heath Street, Ararat, VIC

Price: \$150

Link: <http://aradaleghosttours.com.au>

The evenings will consist of ghost tours and paranormal investigations throughout the building. Sleeping accommodation is in the Aradale Hall.

Call 1300 856 668 to book your spot!

Australian Paranormal Society Paranormal Investigation Workshop

Date: Monday 19th August

Time: 6:30pm to 10:30pm

Location: Royal Melbourne Hotel, 629 Bourke Street, Melbourne VIC 3000

Price: \$60 per ticket

Join us on a 4 hour investigation of the totally haunted spooky Royal Melbourne Hotel! You will be a paranormal investigator along with the APS. You will have use of cameras to film and interact with spirits on the spirit box... and on top of that, access to our medium. You have the opportunity to talk to the ones of the past, so come along to this amazing eventare you up for it? Book your tickets now by calling Bill on 0438 612 916.

Exford Hotel Investigation

Date: Sunday 4th August

Time: 6:30pm - 10:30pm

Location: Exford Hotel, 199 Russell Street, Melbourne, VIC

Price: \$60

The APS team along side "you" will be investigating this incredible place with history. This hotel has had reported deaths due to a fire at the premises early 1900s, and we have investigated here many times with some incredible outcomes. In the past we have found the ones who have passed over interact with us... so don't miss this chance to be apart of this investigation workshop! You will be able to use the equipment and ghost box and hopefully get an opportunity to talk to those who are deceased along side our Medium Rick, and the APS Team.

Please book ASAP to avoid disappointment.

(if you book 4 people the 5th person is free this is a great deal)

Call Bill now on 0438 612 916.

Carmar Paranormal Investigations

Guest Investigation and Paranormal Workshop

Date: Friday 2nd August

Time: 8:00pm to 12:30am

Location: Pratty's Patch, 35 Monstants Road, Maiden Gully, VIC

Price: \$65 including a 2 course meal

Contact CPI to reserve your place for this years Workshop and Investigation at the 150 year old Prattys Patch in Maiden Gully. Later on in the year we will be inviting two lucky people on a Private Investigation with the team of CPI to the Old Ghost Track. Details of payment will be forwarded to guests.

Website:

<http://carmarparanormalinvestigations.weebly.com/>

Workshops Courses and Events - TAS, SA, WA, NT & ACT

Adelaide's Haunted Horizons

Tailem Town Investigation Paranormal Investigation Tour

Date: Most Saturdays

Time: TBA

Location: Tailem Town, Princes Highway, Tailem Bend, SA

Price: \$65.00

<http://www.adelaidehauntedhorizons.com.au/oldtailemtownghosttour.html>

These tours are slightly different from your run of the mill ghost tours as YOU get to try your hand at a bit of ghost-hunting! Come and hang back after your tour with guides, some of who have also been in or are still in the paranormal research field. Let them tell you of their own experiences as well as reported experiences of others. Listen to stories of strange shadows and unusual photographs taken by the public. Hear about some of the characters that once resided in these very buildings before their death and before the buildings were transported to the township plank by plank. Once the two hour tour finishes, get to experience for yourself just what it is like to sit quietly in reportedly active areas of the township for an hour or two. Over

110 buildings to choose from! This is a great opportunity for the paranormal enthusiast, whether a beginner or an experienced investigator, to be able to get access to Tailem Town for a short time under supervised conditions.

Other nights by request for private bookings.

Phone 0407 715 866 or email alison@adelaidehauntedhorizons.com.au

Tailem Town Ghost Tours

Date: Most Saturdays

Time: TBA (2 hours duration)

Location: Tailem Town, Princes Highway, Tailem Bend, SA

Price: \$30.00

<http://www.adelaidehauntedhorizons.com.au/oldtailemtownghosttour.html>

What is the travelling cemetery? What photos taken in the township caught the attention of a paranormal investigation team? What relevance does the name "Jack" caught on their tape have? See and hear material captured both here and in other locations. These are just a few of the questions that will be answered, along with many others, on Tailem Town Ghost Tours. So join us as we guide you through some of the buildings that now reside at the Old Tailem Town Pioneer Village.... after dark! Please note: This walk takes place on uneven ground in many places, for this reason please wear sensible, flat shoes. The area is also dark so please bring a torch if you have one.

Other nights by request for private bookings.

Phone 0407 715 866 or email alison@adelaidehauntedhorizons.com.au

Saint Cecilia Ghost Tour/Investigation Night

Date: Saturday 9th March, Saturday 4th May, Saturday Saturday 7th September and Saturday 2nd November

Time: 5:00pm – 10:00am

Location: 2 Callary Street, Peterborough SA

Price: \$180.00

http://www.adelaidehauntedhorizons.com.au/st_ceciliaghosttours.html

Spend a whole night in this dark, and very imposing Mansion and try and find out for yourself if it is haunted. Why, after Bishop Nortons death, did his replacement refuse to live in this house?

Why does the present owners daughter not want to live in this 'spooky' home?

What nearly knocked a P.F.I. Investigator down the old staircase?

Will you wake to find the Bishop standing at the foot of your bed like a couple did who slept there one night? See if you can find the answers to these questions and more!

This is a whole night of investigation and includes:

- An introduction to the house and paranormal theories
- A history/ghost tour of this mansion
- A 3 course evening meal
- A night of Ghost Hunting with use of H.H. equipment if needed
- Coffee and Tea facilities at all times
- A bed and shower (may be in a shared room)
- A full cooked English Breakfast
- A night of fun

NUMBERS LIMITED SO BOOK NOW! Private bookings available anytime for between 8-12 people

Tel: 0407715866

Email: alison@adelaidehauntedhorizons.com.au

Please note for those that have cat allergies, there is a cat lives in part of this home. So medication will be needed.

Please also note, Adelaide's Haunted Horizons obviously cannot promise a 'ghost' on the night (the paranormal doesn't work like this sadly) but we can ensure you have a fantastic and enjoyable night!

Burra Burra Ghost Tour/Investigation Night

Date: Saturday 16th February and a Saturday ever 2 months.

Time: 5:00pm - 9:00pm

Location: Burra, SA

Price: \$160.00

<http://www.adelaidehauntedhorizons.com.au/burraghosttours.html>

Come with us on one of our special Ghost Tours where once again you get to be the investigator for the night. Explore Burra's past while finding out if some parts of that past still remain to haunt our present.

This is an all-night Investigation Tour that takes in several historic sites in and around Burra including Redruth Gaol, The Police Lock-ups and the Dug-outs. The night will include:

An evening meal at the Burra Hotel including 1 free glass of wine/beer or soft drink with your meal. Familiarising yourself with the equipment and its uses. Going over examples of possible

evidence. Splitting into teams and monitoring these venues for possible ghostly activity.

Breakfast before you go home.

NUMBERS LIMITED SO BOOK NOW!

Private bookings by request for between 8-15 people.

Age 15+

PROWA

I Want To Believe: Striking a balance between passionate belief and constructive research in paranormal investigation

Date: tba

Venue: Theosophical Society, 21 Glendower Street, Perth, WA

Price: Free

Through a frank and informative discussion by Cynthia about passions and interests in the field, along with investigation techniques and equipment, the need for a balance between research and interest is considered. Also discussed is how this balance might positively impact on the progressive development of 'Paranormal' as a potential subject of research beyond the popular culture aspect of the fieldwork activities of interest groups. Adam will also cover some technical aspects of current equipment additionally outlining the potential productive use of other non paranormal new technologies.

Cynthia is a Sessional Academic and PhD Candidate at Curtin University WA and Adam is a Lecturer at Challenger Institute of Technology WA.

<http://tsperth.iinet.net.au/>

Wild Woman Weekend

goddess ∞ empowerment ∞ reconnection ∞ spirit ∞ feminine divine



We call to all women, sisters, mothers, daughters, grandmothers, to all free spirit's, open-hearted ones, goddesses & wild women. The call to come forth, to gather, to circle. Within this space, our own world within worlds, we share stories, magic & wisdom. We create our sisterhood to support, heal, empower & to encourage one another as we all journey along our paths. On this our Wild Woman Weekend we feed, nourish & cherish our very being. We ignite the internal flame to follow our passions, our dreams. We honour ourselves, the elements, goddess's, mother earth & grandmother moon.

Wild Woman
Weekend

2014 theme released soon. See our website for more info

www.wildwomanweekend.com

DRAGON'S EYE TOURS

a journey to enchantment

**Mystical journeys of discovery, pilgrimage and magic
to England and Cornwall and to Ireland**



Visit holy wells and stone circles, pagan temples and ancient castles, passage tombs and haunted pubs, pretty villages and beautiful cathedrals, walk Britain's oldest road and see Ireland's stunningly beautiful North Antrim coast.

Take part in a sacred ritual led by a Druid priestess within the Stonehenge circle and explore history, myth and legend with our expert guides including writer and scholar of enchantment, Ronald Hutton, master dowser Maria Wheatley and in Ireland, witches Janet Farrar and Gavin Bone.

Experience the power and energy of these very special sacred places and participate in rituals and guided meditations including celebrating the Equinox with Janet and Gavin. In England and Cornwall visit Avebury, Glastonbury, Bath, Wells, Tintagel, Bodmin Moor and Boscastle.

In Ireland visit Dublin, the Hill of Tara, Beaghmore stone circles, Emain Macha, the Giant's Causeway, Newgrange and Knowth passage tombs and other sacred places in the Boyne Valley.

To find out more about these two wonderful tours departing London and Dublin September 2013 and 2014 go to



www.dragonseyetours.com

For tour and booking details
contact Christine Casey
Tel: 0437 034 056
Email: dragonseyetours@gmail.com

Jetset
For people who are going places.



Julie Treveton Jewellery & Artwork

Julie creates spiritual pieces that are keys to symbols of power



The posters: Moon mother and her child & Odins Runic circle poster is an ancient magical alphabet. Posters are design and inspired by Julie Treveton, painted by Margret McCardle.

Julie's Contact Details:

Email: julies_haven@hotmail.com

GHOST TOURS

The Rocks Australia



Bookings and Tour Information

Tel +61 (02) 9241 1283

Fax +61 (02) 9247 7910

e-mail spirit@ghosttours.com.au

website www.ghosttours.com.au

e-mail info@therockstours.com.au

website www.therockstours.com.au

Newcastle Ghost Tours



Access Paranormal

*Australia's chosen paranormal
networking website*

Find out more

[Click here](#)



TOURS OF
RICHMOND

Operating for 7 years,
this is the Tasmanian
tour to take... if you
dare! Tour takes approx
2 hours and leaves
after dark most nights.
Call 0488 2782 99 for
details or to book

embrace

... life, love & each other ...

Embracing cultures, religions, and differences
in one magical place

Westfields Miranda

Level: 1

Store: 1028

Phone: (02) 9531 0009

Goth Clothes



FUNKY CLOTHES
COOL SHOES
STEEL CAP BOOTS
FOR MEN &
WOMEN

gothclothes.com.au





Most people want to be in a relationship with someone who shares their values, perspective, and lifestyle. This workshop will be conducted by Janine Donnellan who will discuss the types of Soul Mates that we can attract into our life.

You will learn:

How to prepare yourself for a sacred union, and assess just how prepared you really are,
How to unblock any obstacles that are preventing a good relationship,
How to attract that special some one into your life.

Where: Soul Searchers Spiritual Centre

When: 8th September 2013

Time: 3pm – 5pm

Cost: \$50 includes notes and supper

Bookings are essential so please use our [online booking form](#).

Get SPOOKED at Casula Powerhouse Arts Centre
on our monthly



GHOST Tours

hosted by the Australian Paranormal
Phenomenon Investigators

To be held at 1 Casula Rd, Casula
For bookings, dates, times and other info
contact 9824 1121 or visit
www.casulapowerhouse.com



CASULA
POWERHOUSE
ARTS CENTRE



AXIS MUNDI

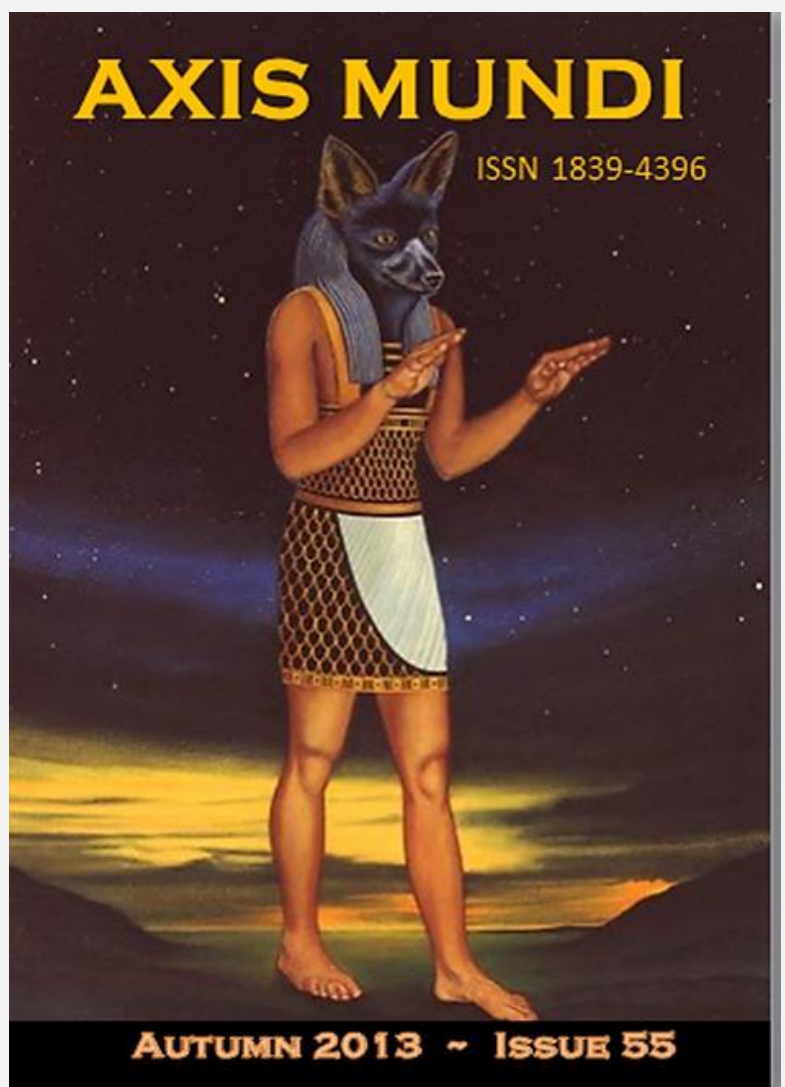
A free online magazine from Spheres Of Light

axismundi.spheresoflight.com.au

Welcome to "Axis Mundi" ISSN 1839-4396

The Axis Mundi is a FREE online magazine, produced on a quarterly basis, which provides topical information to keep you up to date on news and developments in the Australian Pagan community. Subscribers are notified by email each quarter when a new edition is ready. In addition to our usual announcements on upcoming activities and events, the Axis Mundi contains articles and information that correspond to a seasonal theme and highlight the rhythms and cycles of the natural world and our lives. Your suggestions, comments and contributions are strongly encouraged. It is through your active participation that this online magazine will grow and develop into a publication that will empower you on your journey through all realms of possibilities personal, spiritual, and magical.

The Latin term, axis-mundi, literally means the axis of the world. Our logo expresses a shamanic point of connection between sky and earth where the four compass directions meet. At this point travel and correspondence is made between higher and lower realms and is reflected in the concept of 'as above so below'. In the context of our magazine it is meant to define a group that comes together from various ideologies and shares spiritual ideas, knowledge and experiences and is in a process of constant evolution.



Click on the magazine cover to see the latest issue



...so you'll know when a new issue is available.

Quarterly Deadline Dates

Issue	Deadline
July	12 June
October	12 September
January	12 December
April	12 March



Attention Advertisers

!! Did you know that SOL Magazines has now received over 80,000 visits? If you advertise in the Soul Searchers Magazine your ad will also be advertised for free in Axis Mundi !!

Please send an email to...

soulsearchers@spheresoflight.com.au
...or phone Janine on 0408 025 268

Advertisement Sizes and Costs

"Business card".....\$10 per issue or \$30 for 4 issues
 "Quarter page".....\$20 per issue or \$70 for 4 issues
 "Half page".....\$35 per issue or \$120 for 4 issues
 "Full page".....\$50 per issue or \$150 for 4 issues
 (Advertisement sizes are based on an A4 page)

